

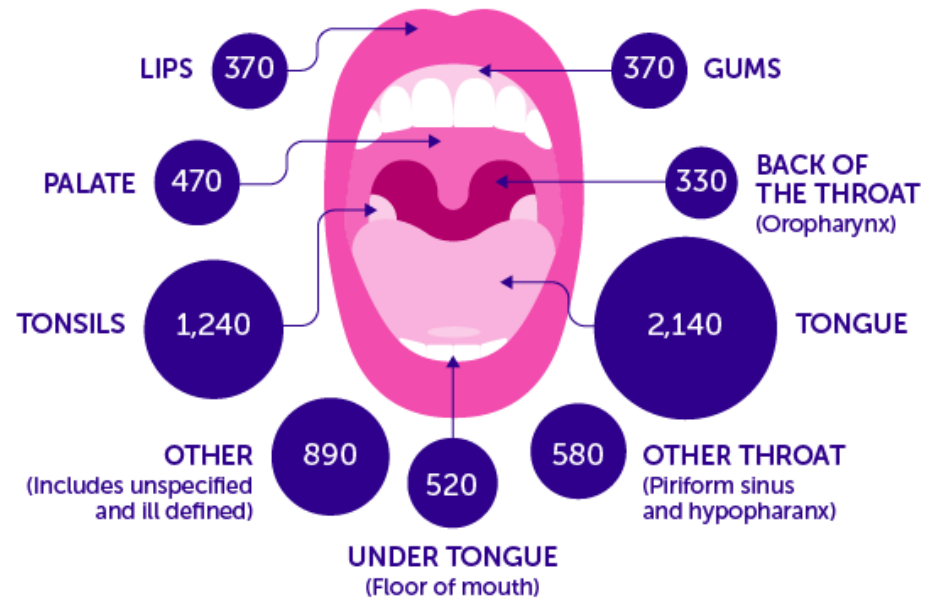


Auto Fluorescence Visualisation

GOCCLES

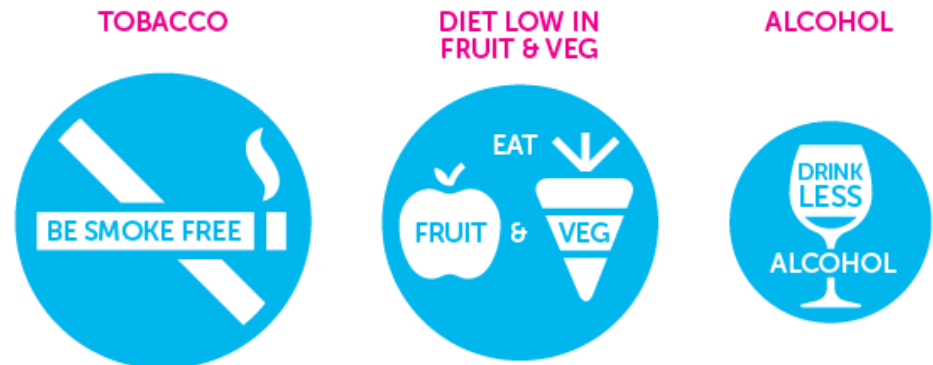
MOUTH CANCER AND THE THREE MAIN PREVENTABLE RISK FACTORS

MOUTH CANCERS AND THE AVERAGE NUMBER OF CASES PER YEAR UK, 2010-2012



THE THREE MAIN PREVENTABLE RISK FACTORS

Proportion of mouth cancer cases that could be prevented each year in the UK, by avoiding each risk factor



Some Facts

Glasses for Oral Cancer (curing light exposed) Screening



60 seconds to save a life



Click for the video


Some
Facts

History

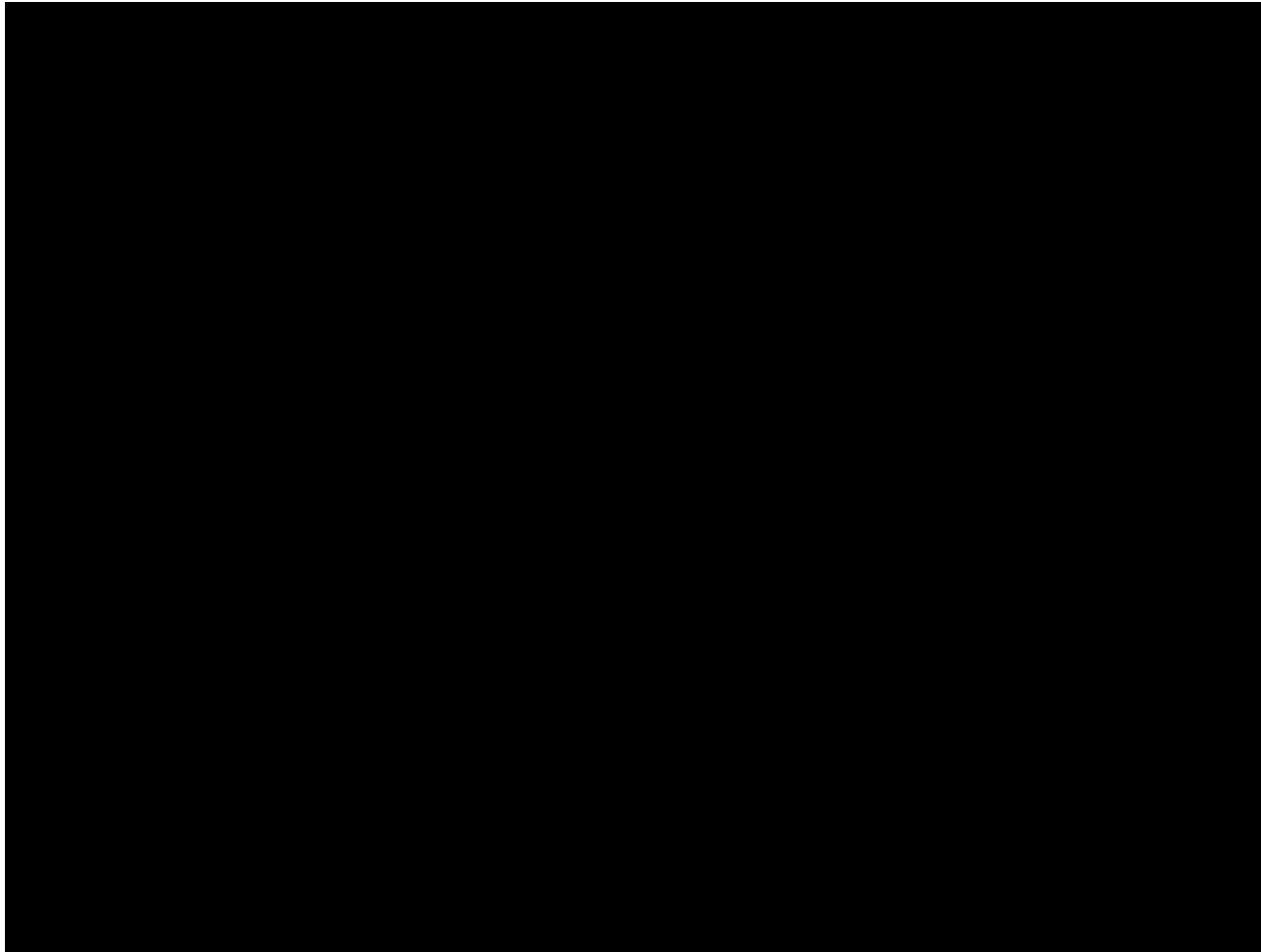
- First used in medicine 1924
- Cervical Screening
- 2012 GDC: mouth cancer early detection

What is it?

- Works on principles of absorption & light reflection
- Pathologically altered tissues vs healthy tissues
- Wavelength of 375-470 nm blue spectrum
- 515nm green spectrum
- Narrow band filters



The Science behind GoCCles



[Click for the video](#)

Evidence

1. Huang et al (2017). Quantitative analysis.

“high specificity and high sensitivity rate of AFV to detect pre and malignant lesions from normal mucosa but concluded that the skill of the clinician will determine its accuracy”

2. Nagi et al (2016). Systematic review, 20 English language papers 2005-2014.

“AFV can help clinicians to identify premalignant and malignant lesions and can more accurately define the borders of true malignancies versus naked eye detection alone”

Evidence

3. Moro et al (2015). Non randomised multi centre study.

"AFV is a useful adjunct to conventional screening methods and can detect invisible malignancy"

All historical papers researched for the article conclude that AVF has a place when screening for oral cancer in conjunction with conventional methods.



What's your view on oral cancer?

GOCCLES®

PREVENTION AND EARLY SCREENING CAN SAVE LIVES.

Oral cancer is one of the most frequent cancers globally, unfortunately its late stage detection is a common problem worldwide.

Early discovery is the most important step in reducing the death rate: when detected in first stage, patients have an 80 to 90 percent survival rate.

Knowing the risk factors and regular check-ups, including a screening of the entire mouth, are essential in the early detection of cancerous and precancerous lesions.

With the innovative Goccles you can run a simple, non-invasive and painless test of the oral cavity, for early screening of oral cancer and other precancerous lesions.



Photograph courtesy of Professor Mike Lewis - School of Dentistry, Cardiff University.



Learn more at
www.dentalsky.com/goccles-oral-cancer-screening-glasses
or call now on **0800 294 4700**



Dental Sky Wholesaler Ltd Unit A, Foster Road, Ashford, Kent TN24 0SH Fax: 0800 294 4701 E-mail: sales@dentalsky.com

Observe or Refer?



Oral Lesions May Show as
Irregular, Dark Areas

Severe
Dysplasia

© 2011 National Cancer Institute. All rights reserved. Oral Cancer Prevention Program



More information

www.dentalsky.com/goccles-oral-cancer-screening-glasses.html



www.njthealth.co.uk

