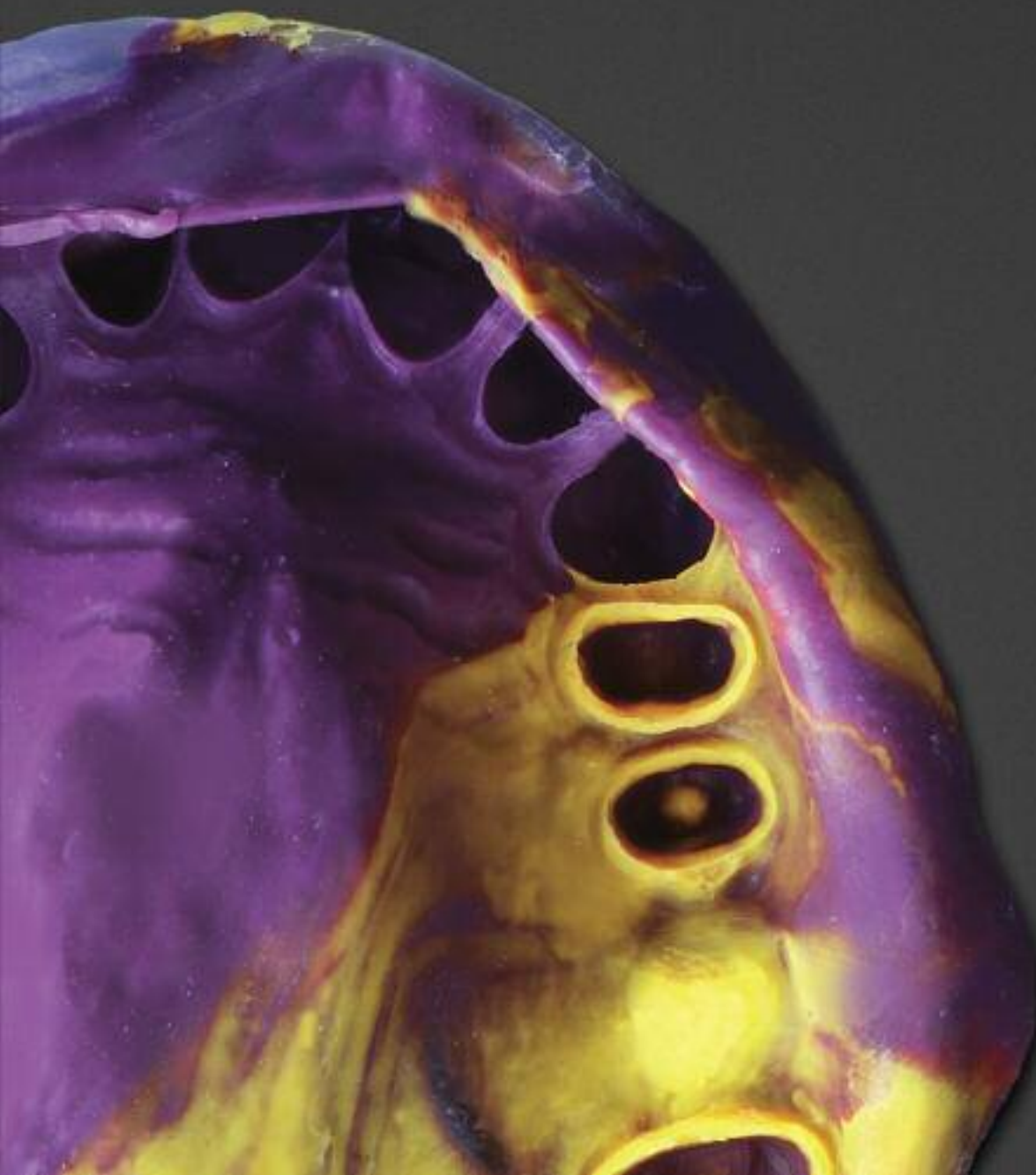


Aquasil Ultra Impression Material.
Putting precision into every procedure.




Aquasil Ultra
SMART WETTING® IMPRESSION MATERIAL

Precisely.

The perfect restoration always begins with an **Aquasil Ultra Impression.**

When your cases are critical, you need consistently precise performance. No matter what the application or procedural preference is, Aquasil Ultra's wide range of tray and wash materials accommodates it.

The vibrant colors of Aquasil Ultra's tray and wash materials contrast, making it easier to read the impression. Indicated here are the types of procedures Aquasil Ultra material is suited for, as well as our specific product recommendations.



Wash material: **Aquasil Ultra XLV**

Tray material: **Aquasil Ultra Rigid**

First Bite® closed-bite tray

Single Unit Cases

Rigid viscosity provides extra stability to resist distortion common to closed-bite trays

Removable Prosthesis

Four "predictable" steps to a perfect-fitting denture

Massad™ Edentulous Tray & Technique

Multi-Unit (2-5) Cases

Precision with stability and readability



Closed- or open-bite tray

Wash material: **Aquasil Ultra XLV**

Tray material: **Aquasil Ultra Heavy**

Impression provided by Vivek Mehta, DMD

Long Span/Full Arch Cases

Aquasil Ultra Xtra material offers longer intraoral work time to give maximum syringe time for larger cases

Wash material: **Aquasil Ultra Xtra**

Tray material: **Aquasil Ultra Xtra**



Impression provided by Alan Boghosian, DDS

Clear Aligners

Detail precision necessary for CAD/CAM design

Wash material: **Aquasil Ultra XLV**

Tray material: **Aquasil EasyMix Putty**



1. Size tray.



2. Place tissue stops.



3. Create border mold: **Aquasil Ultra Rigid** or **Aquasil Ultra Monophase**.



4. Fill with wash material: **Aquasil Ultra LV** or **Aquasil Ultra XLV**.

Impression provided by Joseph Massad, DDS

Aquasil Ultra Material. Optimized for precision. Formulated for ease of use.

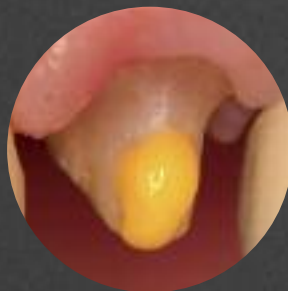
work times

Aquasil Ultra material is available in multiple setting times to suit a variety of clinical scenarios. Understanding this timing is critical to clinical success. For example, fast setting material allows for 35 seconds of syringe time, while tray must be seated in 90 seconds and can be removed from mouth in 3 minutes.

	Wash Material		Tray Material	
	Intraoral Work Time	Bench Time	Mouth Removal Time	
Fast Set	0m 35s	1m 30s	3m 00s	
Regular Set	1m 10s	2m 30s	5m 00s	
Aquasil Ultra Xtra	1m 45s	2m 30s	5m 30s	

surface optimization

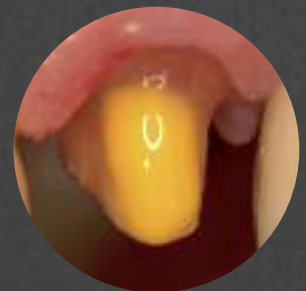
B4® Pre-Impression Surface Optimizer helps you achieve exceptional results by reducing surface tension, allowing the Aquasil Ultra wash material to flow into even hard-to-reach areas.



XLV material flow without B4® surface optimizer



Preparation after application of B4® surface optimizer

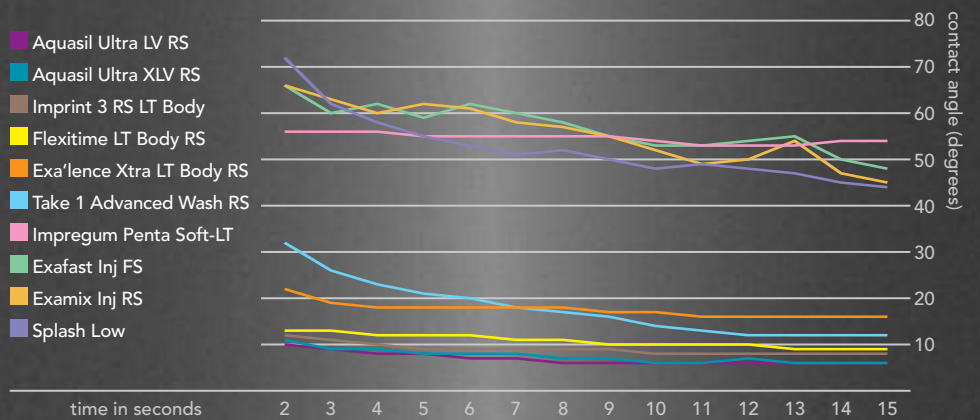


XLV flow following application of B4® surface optimizer



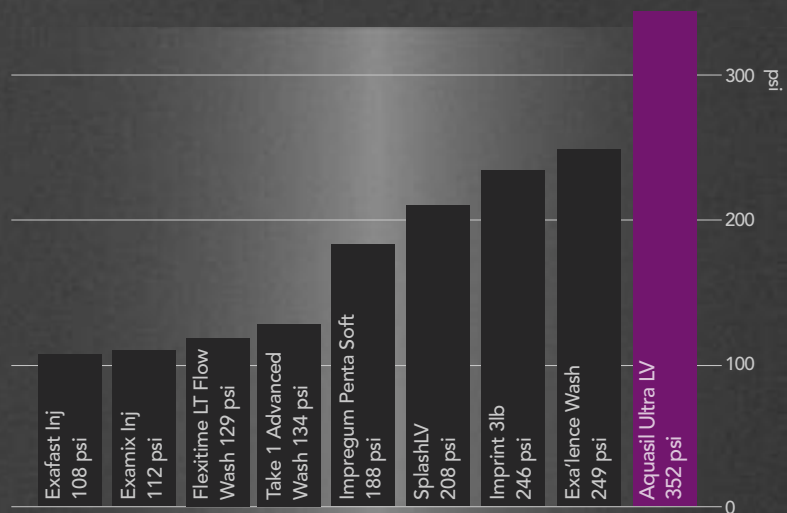
wettability

Aquasil Ultra material is uniquely formulated to minimize voids and bubbles. Extremely low contact angle allows material to capture detail in a moist oral field. Hydrophilicity allows for better adaptation to tooth structure and sulcus.



tear strength

Aquasil Ultra's wash material is at least 40% stronger than 23 other leading wash materials tested.* Superior tear strength keeps impression from tearing or distorting during removal from mouth or separation from model.



* Data on file. For test method visit caulk.com. Imprint 3, Flexitime, Exa'lence, Take 1 Advanced, Impregum Penta Soft-LT, Exafast Inj, Examix Inj and Splash Low are not registered trademarks of DENTSPLY International.

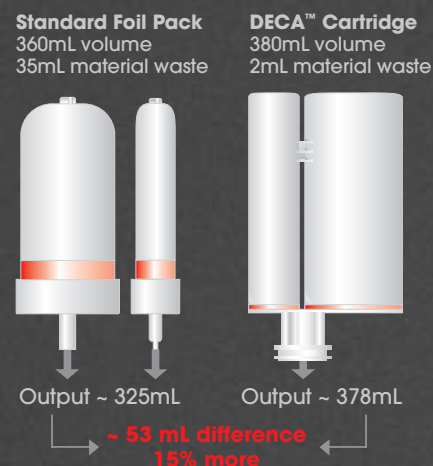
Aquasil Ultra Material. Fits your technique. And your operator.

delivery systems



Dynamic Mixer/ DECA™ 380mL Cartridge

- Ease/durability in a one-component cartridge system
- Provides 15% more useable impression material



Dispenser/50mL Cartridge

- Versatile and convenient
- Effective for tray or wash material



digit® Targeted Delivery System

- Available in two unit dose sizes: small cartridge is ideal for single unit crowns, and large cartridge contains enough material for multiple unit cases.
- Easier access allows for precise placement
- Minimizes waste



www.aquasilultra.com



REALITY has awarded Aquasil Ultra the highest possible rating once again based on viscosities, intraoral flow, shark fin height, working time, mouth removal time, hardness and delivery systems. No other impression material has ever achieved this distinction SEVEN YEARS running.



Aquasil Ultra
SMART WETTING® IMPRESSION MATERIAL

Precisely.

DENTSPLY
CAULK

38 West Clarke Avenue
Milford, DE 19963
1-800-532-2855
www.caulk.com
www.dentsply.com

www.aquasilultra.com


Aquasil Ultra
SMART WETTING® IMPRESSION MATERIAL

Precisely.


For Dental Use Only

©2011 DENTSPLY International. All rights reserved. Form #578983 (12/21/10)

