

# Unitek™ Temporary Anchorage Device (TAD) System

Application Examples



Versatile  
Fixed



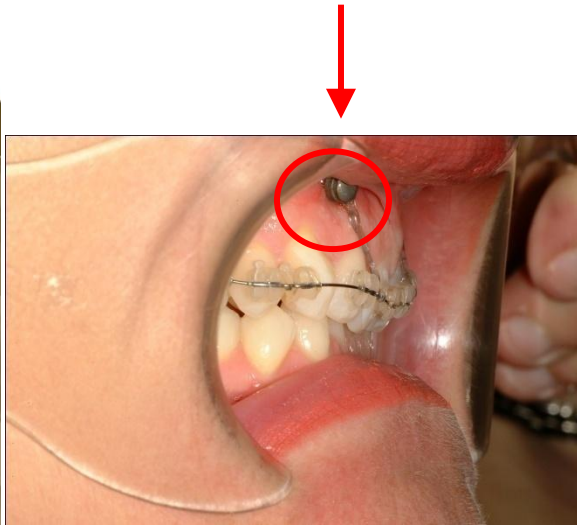
Anchorage  
for Treatment Efficiency

**3M** Unitek

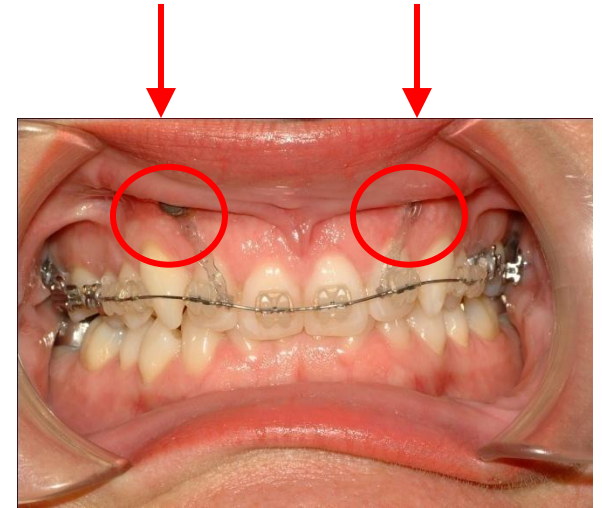
# Application Examples

- Space closure
  - *Retraction of anteriors*
  - *Protraction of posteriors*
- Preprosthetic tooth movement
- Intrusion of teeth
- Extrusion of teeth
- Molar uprighting
- Molar distalization
- Open bite correction
- Asymmetric correction of Class II or Class III
- Correction of canted occlusal plane

# Incisor Intrusion to Correct Deep Bite



**Before**



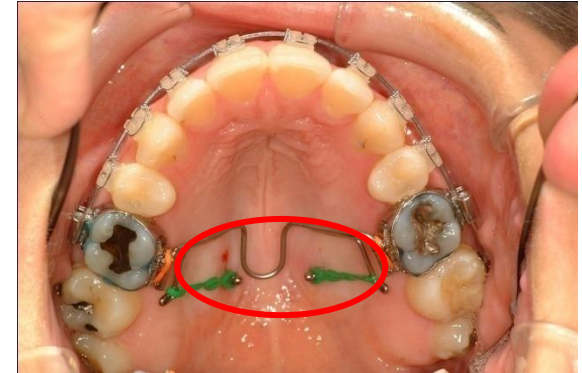
**Progress After 4.5  
Months**



**3M** Unitek



# Posterior Intrusion to Correct Open Bite



**Progress After 12 months**



All clinical cases are used with permission of Dr. Jason B. Cope

**3M** Unitek

## When considering a TAD, what should you look for ?

- How many different types of screws must you inventory based on different head designs, screw lengths and threaded diameters?
- Does the system require an injection, incision and flap, and/or pilot hole?
- Is gingival overgrowth a problem?
- How many different ways you can attach to it?
- Is it important to be able to solder attachments to the TAD?
- Where is the point of force applied to insert the TAD? Is it at the top of the head where the implant is weakest, or at the square base in the middle of the TAD where the implant is strongest?
- Is it packaged as a sterile product?
- Is the TAD material biocompatible?
- Is the TAD registered for orthodontic use?