

Transbond™ IDB Pre-Mix Chemical Cure Adhesive

Transbond™ IDB Pre-Mix Chemical Cure Adhesive

Lunch and Learn





The Leader in
Adhesive Innovation
and Excellence

3M Unitek

Agenda

- Transbond IDB Pre-Mix Chemical Cure Adhesive
 - *Value Proposition*
 - *Product Claims*
 - *Features Advantages Benefits*
 - *Product Consideration*
- Technical Information
- Instructions for Use
- Frequently Asked Questions
- Kit Contents
- Recap

3M Unitek Indirect Bonding Solutions

| 3M Unitek Product Offering | Product Photo | Curing Method | Used for Labial Indirect Bonding | Used for Lingual Indirect Bonding | Mixing Required |
|---|--|---------------|----------------------------------|---|-----------------|
| Sondhi™ Rapid-Set Indirect Bonding Adhesive |  | Chemical Cure | Yes | Though not recommended, some practitioners use Sondhi Rapid Set for Lingual | No |
| Transbond™ Supreme LV Light Cure Adhesive |  | Light Cure | Yes | No | No |
| Transbond™ IDB Pre-Mix Chemical Cure Adhesive |  | Chemical Cure | Yes | Yes | Yes |

Transbond IDB Pre-Mix Chemical Cure Adhesive



3M Unitek

Value Proposition

Transbond™ IDB Pre-Mix Chemical Cure Indirect Bonding Adhesive from 3M Unitek ensures reliability and confidence in delivery as well as performance while allowing the freedom of choice in labial and lingual indirect bonding.



3M Unitek

Product Claims

- Compatible with both lingual (Incognito™ Appliance System) and labial indirect bonding systems
- Archwires can be inserted after removing the tray and cleaning the adhesive flash
- Compatible with commonly used custom base adhesives
- Contains a filler
- Product needs to be refrigerated but can be used at room temperature

Product Claims – Cont.

- Has a 24-month shelf life from date of manufacture (When the adhesive is stored under refrigerated conditions, 35° to 45°F)
- One kit of Transbond™ IDB Pre-Mix Chemical Cure Adhesive will bond at least 30 cases (U&L 7x7)
- Bond strength equivalent to Reliance Maximum Cure® Sealant System and Sondhi™ Rapid-Set Indirect Bonding Adhesive
 - *Has a longer working time than Reliance Maximum Cure sealant*
 - *Has less yellowing than Reliance Maximum Cure sealant*

Features Advantages Benefits

| Features | Advantages | Benefits |
|--|--------------------------|---|
| 24-month shelf life (When the adhesive is stored under refrigerated conditions, 35° to 45°F) | Long storage time | Does not need to be ordered frequently |
| Long Working Time | Relaxed bonding process | Bonding process does not need to be rushed |
| Suitable for lingual and labial indirect bonding applications | Versatile | One adhesive for both types of IDB applications |
| Good bond strength | Reliable bonding process | Brackets stay on teeth |

Product Considerations

- **Not** recommended for direct bonding applications and **Cannot** be used for rebonding Incognito™ Appliance System brackets
 - *Not viscous enough*
- Resin A and B must be mixed well (**10 seconds**) before application
- Tray must be inserted within the required time
 - *Tray must be held (with pressure) for **3 minutes***
 - *Tray must stay in mouth for **4 minutes** before removal*
- Primer application is not necessary

Product Considerations – Cont.

- Excess cured resin must be scaled after tray removal
- Product must be refrigerated when not in use
 - *Product can be used at room temperature (shorter working and set time)*
 - *Product can be used cold (longer working and set time)*
- Resin mixture can be applied to the tooth using a brush or provided applicator
 - *Incognito™ Appliance System bonding instructions call for a brush to apply Reliance Maximum Cure® resin to teeth but a microbrush delivers the right volume of product*

Technical Information

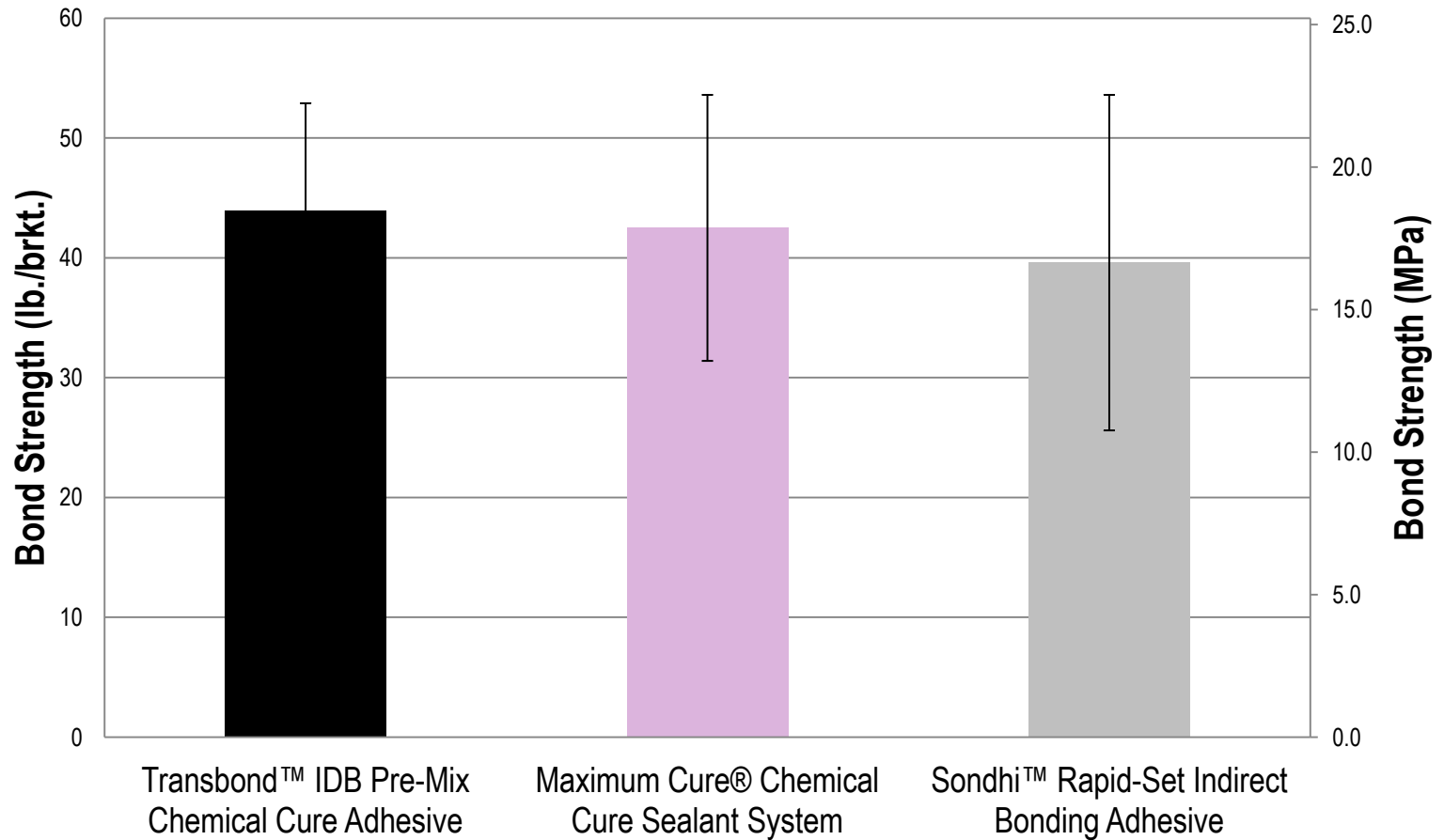


Transbond IDB Pre-Mix Chemical Cure Adhesive Formulation

- Transbond™ IDB Pre-Mix Chemical Cure Adhesive uses the same BisGMA/TEGDMA based dental resin system, the same chemical cure initiator system and the same filler as:
 - *Sondhi™ Rapid-Set Indirect Bonding Adhesive*
 - *Transbond IDB Adhesive must be mixed, sets slower and has less filler*
 - *Concise™ Enamel Bond Resin*
 - *Transbond IDB Adhesive sets faster and contains filler*

Bond Strength Data

Bond Strength of Indirect Bonding Adhesive



Source: 3M Unitek Labs.
Maximum Cure is a trademark of Reliance Orthodontics, Inc.



Work/Set Time

| | Refrigerated | | Room Temperature | |
|---|---------------------------|--------------------------|---------------------------|--------------------------|
| | Work Time (in seconds) | Set Time (in seconds) | Work Time (in seconds) | Set Time (in seconds) |
| Transbond™ IDB Pre-Mix Chemical Cure Adhesive | 140 | 180 | 80 | 110 |
| Maximum Cure® Chemical Cure Sealant | 90 | 150 | 65 | 115 |
| Sondhi™ Rapid-Set Indirect Bonding Adhesive | n/a | n/a | 15 | 30 |

Maximum Cure is a trademark of Reliance Orthodontics, Inc.



Instructions for Use



Tooth Preparation

1. Isolate teeth with the Dry Field System.
2. Prophy teeth with an oil-free pumice or paste.
3. Rinse with water.
4. Air dry thoroughly using oil and moisture-free air source.

Note: If indirect bonding with the Incognito™ Appliance System or another manufacturer's prefabricated indirect bonding tray, follow the manufacturer's recommendations for tooth preparation and proceed to acid etching.

Acid Etching

1. Apply Unitek™ Etching Gel (REF 712-039 or REF 712-044) to tooth surfaces following the instructions provided with the etching gel delivery system.
2. Rinse with water.
3. Air dry thoroughly using oil and moisture-free air source.

Adhesive Bonding

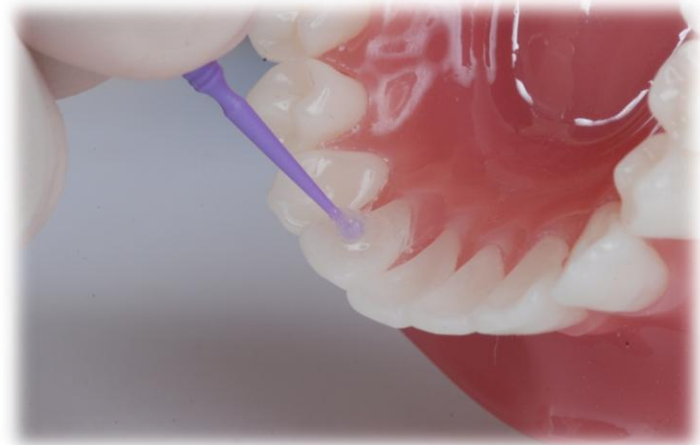
1. Dispense equal amounts Part A and Part B into a disposable mixing well.
2. Using the disposable applicator brush mix Part A and Part B together by stirring for 10 seconds.



3M Unitek

Adhesive Bonding – Cont.

3. Apply a thin coat of the mixed adhesive to each custom resin base in the indirect bonding tray.
4. Apply a thin coat of the adhesive material to the tooth surface.



3M Unitek

Adhesive Bonding – Cont.

5. The tray is then seated and held in place for 3 minutes. Allow adhesive to set for 4 minutes before tray removal.
6. Repeat the steps for the opposing jaw.



Tray Removal

1. Remove the Dry Field System.
2. Remove the tray using a scaler to peel the tray from the lingual to buccal.
3. Scale the excess resin from around brackets and from the interproximal contact. Use dental floss to check that all contacts are open.
4. Archwires can be immediately placed and tied in or engaged into the clips of a SmartClip™ or Clarity™ SL Self-Ligating Appliance.

Frequently Asked Questions



Frequently Asked Questions

Q Can Transbond™ IDB Pre-Mix Chemical Cure Adhesive be used in direct bonding techniques?

A *Transbond IDB Adhesive cannot be used as a direct bond adhesive. Adequate bond strength will not be achieved without the custom base of an indirect bonding system.*

Q Can Transbond IDB Adhesive be used for both labial and lingual indirect bonding techniques?

A *Yes, Transbond IDB Adhesive is indicated for use with labial indirect bonding that includes the use of a custom base, and for indirect bonding with the Incognito™ Appliance System.*

Q How long does the tray need to be held in the mouth?

A *The tray should be held firmly in position in the mouth for 3 minutes. The tray should remain seated for a total of 4 minutes before being removed from the mouth.*

Frequently Asked Questions

Q How long can I wait before placing the archwire?

A *Initial archwires may be placed immediately upon removal of the indirect bonding tray and after cleaning all flash and interproximal contacts.*

Q Can I use a primer with Transbond™ IDB Pre-Mix Adhesive?

A *Although a primer is not necessary, Transbond IDB Adhesive is compatible with Transbond™ XT Light Cure Primer and Transbond™ MIP Moisture Insensitive Primer. Transbond IDB Adhesive is **not** compatible with Transbond™ Plus Self Etching Primer.*

Refer to the Transbond™ IDB Pre-Mix Chemical Cure Adhesive FAQ Sheet (REF 021-101) for the full list of Frequently Asked Questions.

Kit Contents



Transbond™ IDB Pre-Mix Chemical Cure Adhesive

- Kit contents (REF 712-120):
 - 1 bottle Resin A – 10 g
 - 1 bottle Resin B – 10 g
 - 2 boxes standard applicators – 100/pk
 - Disposable wells – 20
- Reorder items
 - Resin A (10g) – (REF 712-121)
 - Resin B (10g) – (REF 712-122)
 - Disposable Wells – (REF 712-023)
 - Standard Applicators – (REF 712-092)



Recap

- Transbond™ IDB Pre-Mix Chemical Cure Indirect Bonding Adhesive from 3M Unitek ensures reliability and confidence in delivery as well as performance while allowing the freedom of choice in labial and lingual indirect bonding
- Bond strength equivalent to Reliance Maximum Cure® Sealant System and Sondhi™ Rapid-Set Indirect Bonding Adhesive
- Not recommended for direct bonding applications and cannot be used for rebonding Incognito™ Appliance System brackets

