

Imaging Comfort & Protection Products

When it comes to your
patients and your investment
in dental radiography,
Crosstex protects!



CROSSTEX® | PROTECTSSM
A CANTEL MEDICAL COMPANY

888-276-7783 | crosstex.com

WHY CROSSTEX®?

Better imaging, better infection control, and a better patient experience

Over 20 years ago, an experienced RDH set out to solve a long-time challenge of dental radiography: patient discomfort caused by the rigid edges of x-ray film packets. Her innovation: Edge-Ease®, the original dental imaging comfort cushion. By wrapping the edge of the film with Edge-Ease, the patient's soft tissue was protected from abrasions and discomfort. This, in turn, enabled the patient to bite harder for more precise positioning and a more accurate x-ray, with less need for retakes.

From this original breakthrough by a hygienist, the Crosstex line of imaging comfort cushions was born.

Today, Crosstex offers comfort and protection products suited for a wide range of today's most popular film-based and digital radiography systems and components, including sensor sleeves, phosphor plates, Rinn®-style positioners and Schick® CDR® bite holder tabs.

Diagnostic imaging is an integral part of most dental procedures. Innovative Crosstex imaging comfort cushions, bitewing tabs and digital sensor sleeves make dental radiography more comfortable and convenient for patients, while controlling infection, improving imaging results, and protecting your equipment investment!

This brochure is designed to serve as a guide to your selection and use of Crosstex imaging products. For more information, please visit crosstex.com or call **888-276-7783**.

For ordering information, please see back cover.



Edge-Ease®

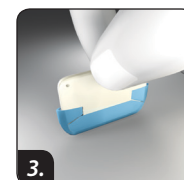
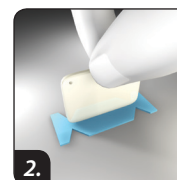
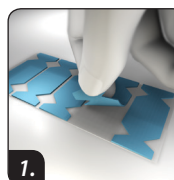
Take the edge off of x-rays

Edge-Ease cushions provide a soft comfortable edge to protect the patient's soft tissue from x-ray film and sensor abrasions.

- Allow the patient to bite harder on positioning devices, for better periapical positioning and more accurate diagnostic X-rays.
- Easily adhere to film packets, phosphor plates and digital sensor barrier sleeves.
- Save time and money while decreasing the need for retakes.

HOW TO USE

1. Peel off the cushion from the liner.
2. Place on center of film or sensor barrier.
3. Fold in corners.



Bitewing-Ease®

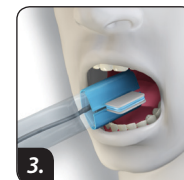
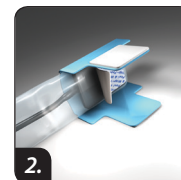
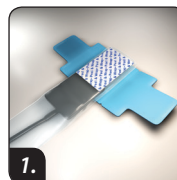
Easy positioning with built-in bite tab

A seamless, cushioned barrier sleeve that adjusts snugly to fit all types of sensors and folds to create a bite tab.

- Enable easy sensor positioning for more accurate images.
- All-in-one seamless barrier sleeve, comfort cushion and bite tab.
- Bite tab thickness protects sensor cord.
- Can be used with sensors and Rinn® XCP® system components.

HOW TO USE

1. Insert sensor image side up.
2. Remove liner and fold to center to create bite tab.
3. Take image and discard after use.



Wrap-Ease®

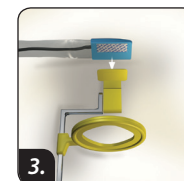
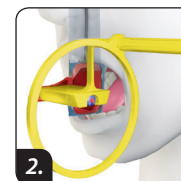
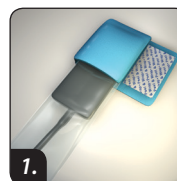
All-in-one protection and convenience

A fully adjustable, all-in-one seamless barrier sleeve, comfort cushion and positioning aid that fits all brands of sensors!

- Cushioned sensors provide maximum patient comfort.
- Converts autoclavable film holders into sensor holders.
- Great for vertical bitewings.
- Eliminates the need for disposable sensor holders.

HOW TO USE

1. **Sensors:** Insert sensor image side down. Remove liner and fold over.
2. **Kerr Kwik-Bite®/Hawe x-ray film holders:** Remove liner and attach to back of holder.
3. **Rinn® XCP® System:** Remove half of liner and attach to back of holder. Repeat for opposing quadrant. Discard after use.



It's-A-Wrap®

Wrap-able, adjustable seamless comfort sleeves

Innovative seamless, cushioned barrier sleeves designed for use with Schick® CDR® disposable bite holder tabs and Rinn®-style positioners.

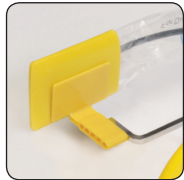
- Available in two sizes: yellow fits size 2 sensors; white fits size 0-1 sensors.
- Fully adjustable to all sensor types and brands.
- Seamless and cushioned for maximum patient comfort.
- Protects valuable sensors.
- Quick, easy and economical!

Getting Started

1. Insert sensor image side down.
2. Remove liner and fold over for a snug fit. Then attach to appropriate Schick adhesive-backed CDR tab. Discard after use.



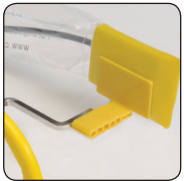
Posterior Periapical X-rays



Size 2 sensors:

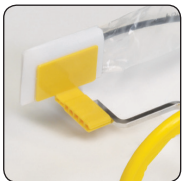
Attach yellow Schick CDR tab to yellow It's-A-Wrap. Use posterior aiming ring and arm. Take images of first two quadrants.

Shown: positioning for upper right or lower left quadrant.



Remove Schick CDR tab and adjust aiming ring and arm. Reattach tab and take images of remaining two quadrants.

Shown: positioning for upper left or lower right quadrant.



Size 0-1 sensors:

Attach yellow Schick CDR tab to white It's-A-Wrap, and follow instructions above.

Shown: positioning for upper right or lower left quadrant.

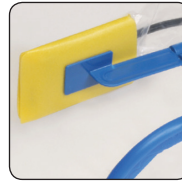
Anterior Periapical X-rays



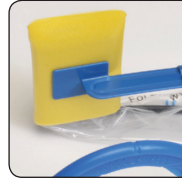
Attach white Schick CDR tab to white It's-A-Wrap for size 0-1 sensors, or yellow for size 2 sensors. Use center aiming ring and anterior arm.



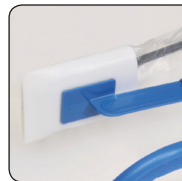
Bitewing X-rays with Aiming Ring & Arm



Horizontal bitewing, size 2 sensor: attach blue Schick CDR tab to yellow It's-A-Wrap. Use center aiming ring and bitewing arm.



Vertical bitewing, size 2 sensor: attach blue Schick CDR tab to yellow It's-A-Wrap.

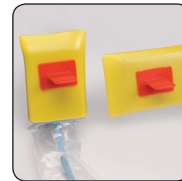


Horizontal bitewing, size 0-1 sensor: attach blue Schick CDR tab to white It's-A-Wrap. Use center aiming ring and bitewing arm.



Vertical bitewing, size 0-1 sensor: attach blue Schick CDR tab to white It's-A-Wrap.

Bitewing X-rays Free-hand Technique



Vertical and horizontal bitewing, size 2 sensor: attach red Schick CDR tab to yellow It's-A-Wrap.



Vertical and horizontal bitewing, size 0-1 sensor: attach red Schick CDR tab to white It's-A-Wrap.

Endodontic X-rays



Anterior or posterior: attach green Schick CDR tab to white It's-A-Wrap for size 0-1 sensors and yellow It's-A-Wrap for size 2 sensors.

Sensor Slippers®

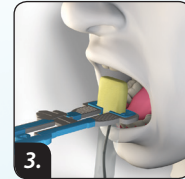
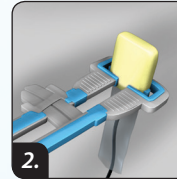
Keeps sensor stable in holder

The cushioned sensor sleeve built for use with gripping-style holders, such as Rinn® Uni-Grip® and Eezee-Grip®.

- Foam cushion stabilizes sensor in the holder and prevents slippage.
- Creates a softer edge that won't abrade corners of the mouth.
- Seamless sleeve won't split open.

HOW TO USE

1. Insert sensor into Sensor Slipper.
2. Insert cushioned sensor into gripping-style holder.
3. Take image and discard after use.



Slip-Ease®

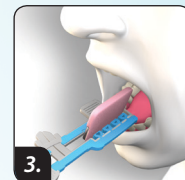
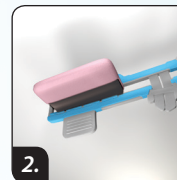
Protection for all types of imaging

Unique protective cover slips over all brands of x-ray film, plates, sensors and positioning devices.

- Works best with gripping-style sensor holders.
- Smooths edges and corners of devices to add comfort.
- Adheres with patented Safety Strip to prevent accidental aspiration.
- Requires only one for full mouth series using phosphor plates or wireless sensors.
- Helps protect phosphor plates from being scratched.

HOW TO USE

1. Place wireless sensor or phosphor plate in barrier sleeve (not included), then insert into Slip-Ease.
2. Remove liner from Safety Strip, and press to stick.
3. Take image and discard after use.



Bitewing Tabs

Ensure accurate imaging

Self-adhesive, latex-free tabs ensure accurate, distortion-free bitewing radiographs and patient comfort.

- Attaches easily to both adult and pediatric x-ray films.
- Tabs hold securely when patients close their mouth to ensure precise positioning.



- Pop-out dispenser packaging saves time.
- Convenient, sanitary and economical!



Digital Sensor Sleeves

A smoother patient experience

Traditional sensor sleeves have rough seams that can irritate delicate mucosal tissue during radiographic procedures. Crosstex Digital Sensor Sleeves have smooth seams – eliminating the patient discomfort that rough seams can cause.

- Manufactured from soft polyethylene.
- Provide reliable protection against cross-contamination.
- Convenient sizing to fit all common digital imaging sensors.
- Covers and protects valuable sensors.



Smooth seams of Crosstex Digital Sensor Sleeves



Rough seams of traditional sensor sleeves



Ordering Information

Edge-Ease®

Description	Quantity	Item #
Large (blue) Fits long edge of size 2 film and sensors	300/box	BWEEB
Small (white) Fits short edge of size 1-2 film and sensors	300/box	BWEEW

Slip-Ease®

Description	Quantity	Item #
Large (pink) Fits size 2 film and sensors	100/box	BWSEL
Small (blue) Fits size 0-1 film and sensors	100/box	BWSES

Bitewing-Ease®

Description	Quantity	Item #
Large (white) Adjustable to fit all size 2 sensors	50/box	BWEL
Small (blue) Adjustable to fit all size 0-1 sensors	50/box	BWES

Digital Sensor Sleeves

Description	Quantity	Item #
Small (clear) 1.375" x 8.25"	500/dispenser box	BCXSS
Large (clear) 1.625" x 8.5"	500/dispenser box	BCXSL

Wrap-Ease®

Description	Quantity	Item #
Large (white) Adjustable to fit all size 2 sensors	50/box	BWWEL
Small (blue) Adjustable to fit all size 0-1 sensors	50/box	BWWES

Bitewing Tabs®

Description	Quantity	Item #
Bitewing Tabs	500/box	YBT

It's-A-Wrap®

Description	Quantity	Item #
Large (yellow) Adjustable to fit all size 2 sensors	50/box	BWRAPL
Small (white) Adjustable to fit all size 0-1 sensors	50/box	BWRAPS

Sensor Slippers®

Description	Quantity	Item #
Large (yellow) Fits size 2 sensors	50/box	BWSSL

CROSSTEX®
A CANTEL MEDICAL COMPANY

PROTECTSsm

10 Ranick Road
Hauppauge, NY 11788-4209 USA

Tel: 631-582-6777 | 888-276-7783
Fax: 631-582-1726 | E-mail: crosstex@crosstex.com

crosstex.com