

# OSHA COMPLIANCE AND INFECTION CONTROL SYSTEM

The comprehensive OSHA Compliance and Infection Control Program covers all aspects of the OSH Act as well as the CDC Infection Control Guidelines and other important regulatory areas that affect your practice.

## The Program includes:

- Complete written training manual with required documents
- Complete Infection Control Program as outlined by the CDC
- Required written Exposure Control Plan
- Required written Hazard Communication Plan
- TB Compliance Program
- Workplace Violence Program
- Family and Medical Leave Act Compliance
- Sexual Harassment Policy requirements
- Flash drive containing all pertinent OSHA regulations and CDC Infection Control Guidelines
- Comprehensive online training for doctor and staff
- 3 CEUs for three individuals after exam completion
- Assistance with OSHA inspections
- Toll free telephone and online technical support
- GHS Hazardous Material Wall Chart
- Required labor law poster
- Upgrade service (1 year)



DCPE OSHA Compliance and Infection Control System (Dental) **\$499.00**

Includes OSHA Mandated Globally Harmonized System (GHS) Training

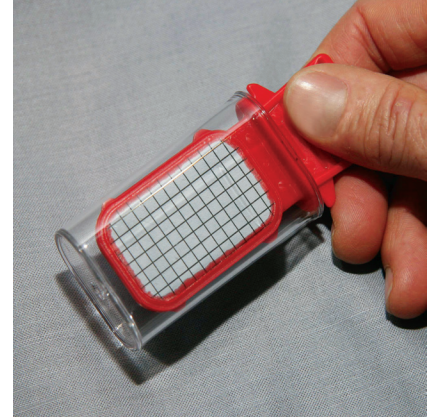
Undergoing an OSHA audit?  
Ask us about our emergency assistance.  
**888-388-4782**

# WATER TESTING PROGRAM

A Q U A S A F E<sup>®</sup>

It is recommended that testing of dental unit water be conducted quarterly to ensure it meets CDC guidelines for bacterial levels. This easy-to-use kit is inexpensive and provides accurate in-office results.

WTK-A (1) Unit	\$24.95
WTK-B (2) Units	\$89.95
WTK-C (3) Units	\$159.95
WTK-D (4) Units	\$199.95
WTK-E (5) Units	\$372.95



# NITROUS OXIDE MONITOR

Nitrous oxide levels should be maintained below a time weighted average (TWA) of 25 ppm in operating rooms and 50 ppm in dental treatment areas, according to OSHA regulations. Monitoring is recommended at least quarterly. This service provides accurate and affordable results. Mail-in envelopes and result analysis are included.

NOM1 (1) Unit	\$102.99
NOM2 (2) Units	\$189.95
NOM3 (3) Units	\$269.95
NOM4 (4) Units	\$399.95



# X-RAY MONITORING BADGE

An affordable investment in workplace safety

Experts agree that there is no safe level of radiation. Even the smallest dose may cause cancer and genetic damage. Any healthcare facility may be exposing staff to unsafe levels of radiation. That’s why accurately measuring and recording radiation exposure over the long term is important for your employees and your practice. The Landauer Luxel Plus with state-of-the-art Optimally Stimulated Luminescence (OSL) technology, has the highest sensitivity available today—10 times the sensitivity of other technologies!

## Features include:

- Fastest reporting in the industry
- A lifetime exposure record is archived for safekeeping
- Protects pregnant workers
- Personalized badges
- Web-based reporting
- Automatic renewal program



XXMBM Monthly Badge Service	<b>\$164.95</b>
XXMBQ Quarterly Badge Service	<b>\$102.99</b>

# MASTER SPILL KIT

This kit combines all of the Biological, Chemical and Mercury Spill Kit materials.

## The complete kit includes:

- BioSponge® powder
- ChemSponge® powder
- MercSponge® powder
- 1 Mercury magnet
- 1 Mercury scrubber
- 1 Pair reusable nitrile gloves
- 1 Pair safety goggles
- 1 Scooper & pan
- 3 Masks
- 6 Disposal bags
- 5 Biohazard warning labels



Master Spill Kit



Chemical Spill Kit



Biological Spill Kit



Mercury Spill Kit

MSK Master Spill Kit	<b>\$139.95</b>
BISK Biological Spill Kit	<b>\$60.99</b>
CHSK Chemical Spill Kit	<b>\$64.99</b>
MESK Mercury Spill Kit	<b>\$87.99</b>

# COMPLIANCE CHECKLIST

## Does Your Dental Facility Have What it Needs to be in Compliance?

Required	Recommended	Product Name	Code
●		OSHA Compliance/Infection Control Program-Dental	DCPE
●		HIPAA Compliance Program	HIP
●		OSHA/Infection Control Annual Online Training Program-Dental	STR/VP6D
●		Biohazard Warning Labels	BWL2
	●	Bloodborne Pathogen Poster	BCWC
●		Compliance Labeling Kit	CLK
●		Cough Etiquette Sign	CEPS
●		CPR Microshield	CPM
	●	Dental Unit Waterline Testing System	WTK-A
●		Dispose-Alloy™ Amalgam Recycling Program	ARPL
●		Eyewash Inspection Tags	EWIT
●		Eyewash Sign	ESP
●		Emergency Eyewash Station	EESE
●		Federal Labor Law Poster	LLP
●		Fire Extinguisher	RFE
●		Fire Extinguisher Sign	FES
	●	Fire Safety and Disaster Online Training Program	FSD/VP
●		First Aid Kit	FASK
●		Fluid Resistant Laundry Bag with Stand	LBC
●		Formaldehyde and Glutaraldehyde Vapor Monitor	FMP1
●		Gloves-Nitrile Utility	NUG1M
●		Glow-In-The-Dark Exit Sign	EXS
●		Lab Case Disinfectant Labels	LCD100
●		Laser Safety Eyewear	LPE1
●		Master Spill Kit	MSK
●		Medical Gas Warning Sign	MGWS
	●	Needle Recapper (Single-Handed)	SHR1
	●	Nitrous Oxide Monitor	NOM1
●		Portable Eyewash Station**	EWP
●		Radiation Caution Labels	RCL
●		Safety Eyewear	FSG
	●	Scalpel Blade Remover	SBR1
	●	SDS Binder	SDSB
●		Sharps Kaddy-Small	SK1
●		Slip-On Side Shields	SS12
●		Sterilization Pouch Stamp and Pad	SPP1
●		Tooth Disposal System	TDS
●		X-Ray Monitoring Badge*	XXMBQ

\*X-Ray Monitoring is required in some states, but recommended in all.

\*\* For Mobile Units