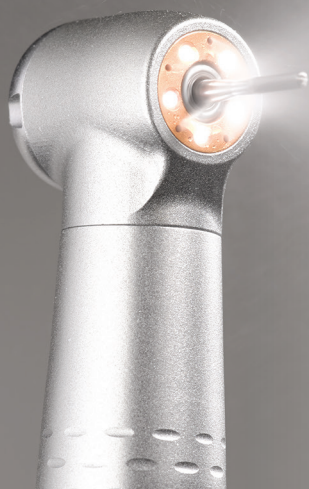


Upgrade  
to efficiency  
and comfort.



**2nd Quarter  
Handpiece Promotions**

April 1, 2018 – June 30, 2018  
Free item equal to or less than the lowest priced item.

**ALL HANDPIECES**

**Buy 3  
Handpieces**

**Get 1  
FREE Handpiece**



1

**SAVE UP TO \$1,695** off suggested retail price

**AIR HIGH-SPEED LED 500 | 400 | 300**

**Buy 3  
Synea 500, 400, or 300 LED  
Air High-Speed Handpieces**

**Get 2  
1 FREE Synea 500, 400, or 300  
LED Air High-Speed and  
1 FREE Matching Coupler  
(RQ-24 or RQ-54)**



3

**SAVE UP TO \$1,940** off suggested retail price

**CAMERA**

**Buy 1  
Any Acteon Intra Oral Camera**

**Get 1  
FREE Integrated Mini USB2 Controller**



5

**SAVE UP TO \$1,350** off suggested retail price

**AIR LOW-SPEED**

**Buy 3  
Air Low-Speed Handpieces or Motors**

**Get 1  
FREE Air Low-Speed Handpiece  
or Motor**



2

**SAVE UP TO \$1,475** off suggested retail price

**ELECTRIC**

**Buy 3  
1 EA-53 Electric Motor Kit  
(Integrated or Tabletop) and  
2 Electric Handpieces**

**Get 1  
FREE Electric Handpiece**



4

**SAVE UP TO \$1,695** off suggested retail price

**HANDPIECE MAINTENANCE**

**Every Day Low Price**  
Assistina Handpiece  
Maintenance Kit  
(includes 1 year supply  
of oil and cleaner)



**\$1,995** suggested retail price

Promotion #1		Buy any 3	Get 1 FREE
Buy any 3 handpieces (Synea 500, 400, Alegra 300, Proxeo or Endea), get 1 handpiece of equal or lesser value FREE.			
All handpieces			

Promotion #2		Buy any 3	Get 1 FREE
Buy any 3 air low-speed handpieces (Alegra 300, Proxeo) or motors, get 1 air low-speed handpiece or motor FREE.			
0.30120001	Alegra 300 WE-56T, 2.35mm latch, mini head, 1:1 LS, A-dec W&H connection		
0.30122001	Alegra 300 WE-66T, 2.35mm latch, mini head, 4:1 LS, A-dec W&H connection		
0.30121001	Alegra 300 WE-57T, 1.6mm FG, mini head, 1:1 LS, A-dec W&H connection		
0.30123001	Alegra 300 HE-43T, straight, 1:1 chairside lab, A-dec W&H connection		
0.30124000	Alegra 300 WE-56TMW, 2.35mm latch, mini head 1:1 LS, Midwest connection		
0.30125000	Alegra 300 WE-57TMW, 1.6mm FG, mini head 1:1 LS, Midwest connection		
0.30126000	Alegra 300 HE-43TMW, straight, 1:1 chairside lab, Midwest connection		
0.30127000	Alegra 300 WE-56TSD, 2.35mm latch, mini head 1:1 LS, StarDental connection		
0.30128000	Alegra 300 WE-57TSD, 1.6mm FG, mini head 1:1 LS, StarDental connection		
0.30129000	Alegra 300 HE-43TSD, straight, 1:1 chairside lab, StarDental connection		
0.30192001	Proxeo WP-64T, micro, prophy cups, 4:1, A-dec W&H connection		
0.30314000	Proxeo WP-64TS, micro, prophy cups, 4:1 (works with WP-64TS prophy set)		
0.30191001	Proxeo HP-44T, prophy angles, 4:1, A-dec W&H connection		
0.30313000	Proxeo HP-44TS, micro, prophy angles, 4:1 (works with HP-44TS prophy set)		
0.30079000	Proxeo HP-44TMW, prophy angles, 4:1, Midwest connection		
0.30080000	Proxeo HP-44TSD, prophy angles, 4:1, StarDental connection		
0.30106001	AM-20RM, 20,000 rpm, air motor for A-dec W&H connection		
0.30115000	AM-20MW, 20,000 rpm, air motor for Midwest connection		
0.30114000	AM-20SD, 20,000 rpm, air motor for StarDental connection		
0.30219000	AM-5SD, 5,000 rpm, air motor for StarDental connection		
0.30220000	AM-5MW, 5,000 rpm, air motor for Midwest connection		

Promotion #3		Buy any 3	Get 1 FREE	Get 1 FREE
Buy 3 Synea 500, 400 or 300 LED air high-speed handpieces, get 1 Synea 500, 400 or 300 LED air high-speed handpiece of equal or lesser value and 1 matching coupler (RQ-24 or RQ-54) FREE.				
0.30016001	Synea 500 TK-94L, micro head, LED+ (requires RQ-24)			
0.30017001	Synea 500 TK-97L, mini head, ring LED+ (requires RQ-24)			
0.30019001	Synea 500 TK-98L, standard head, ring LED+ (requires RQ-24)			
0.30021001	Synea 500 TK-100L, torque head, ring LED+ (requires RQ-24)			
0.30004002	Synea 400 TG-97L, mini head, LED+ (requires RQ-24)			
0.30001002	Synea 400 TG-98L, standard head, LED+ (requires RQ-24)			
0.30066001	Alegra 300 TE-97LQ, mini head, self-generated LED+ (requires RQ-54)			
0.30067001	Alegra 300 TE-98LQ, standard head, self-generated LED+ (requires RQ-54)			
0.10402430	RQ-24 Coupler			
0.10405430	RQ-54 Coupler			

Promotion #4		Buy any 1	Buy any 2	Get 1 FREE
Buy 1 EA-53 electric motor kit (integrated or tabletop) and 2 electric handpieces, get 1 electric handpiece of equal or lesser value FREE.				
EA-53 electric motor kit (integrated or tabletop)				
0.30216001	Synea 500 WK-93LTS, micro head, lighted, 1:4.5 high-speed			
0.30024001	Synea 500 WK-93LT, micro head, lighted, 1:4.5 high-speed			
0.30217001	Synea 500 WK-56LTS, micro head, lighted, 1:1 low-speed			
0.30025001	Synea 500 WK-56LT, micro head, lighted, 1:1 low-speed			
0.30028001	Synea 500 HK-43LT, straight, lighted, 1:1 chairside lab			
0.30195000	Synea 400 WG-99LT, mini head, lighted, 1:5 high-speed			
0.30009001	Synea 400 WG-56LT, mini head, lighted, 1:1 low-speed			
0.30011001	Synea 400 WG-66LT, mini head, lighted, 2:1 low-speed			
0.30212000	Synea 400 WG-57LT, 1.6mm FG, mini head, lighted, 1:1 low-speed			
0.30013001	Synea 400 HG-43A, straight, non-lighted, coolant, 1:1 chairside lab			
0.12227931	Endea EB-79, micro head, endodontic files, 2:1 endo			
0.12227731	Endea EB-77, micro head, endodontic files, 4:1 endo			
0.10114432	Proxeo HP-44M, disposable prophy angles, 4:1 prophy			
0.10216432	Proxeo WP-64M, micro head, screw-in cups, 4:1 prophy			
0.10216434	Proxeo WP-64MU, micro head, all cups, 4:1 prophy			
54.0478.00	EA-53 electric motor only			

Promotion #5		Buy any 1	Get 1 FREE
Buy 1 Acteon intra oral camera, get 1 integrated mini USB2 controller FREE.			
54.0471.00	SoproCare intraoral camera handpiece only		
54.0392.00	SoproLIFE intraoral camera handpiece only		
54.0421.00	Sopro 717 First intraoral camera handpiece only		
54.0263.00	Sopro 617 intraoral camera handpiece only		
54.0584.00	Integrated Mini USB2 Controller		



Free item equal to or less than the lowest priced item. Promotions cannot be combined. Promotion substitutions are not permitted. Certain items may be subject to product changes and/or availability.

A-dec, W&H, KaVo, NSK, Midwest, StarDental are registered trademarks. ICX is a registered trademark of A-dec; MULTiflex is a registered trademark of KaVo; PTL is a registered trademark of NSK. All other products or services mentioned in this document are covered by the trademarks, service marks, or product names designated by the companies marketing those products.

Certain touchpad symbols are proprietary to A-dec Inc. Any use of these symbols, in whole or in part, without the express written consent of A-dec Inc., is strictly prohibited.

To receive your free goods send dealer invoice via fax to 1.503.538.0276 or email to domestic@a-dec.com.