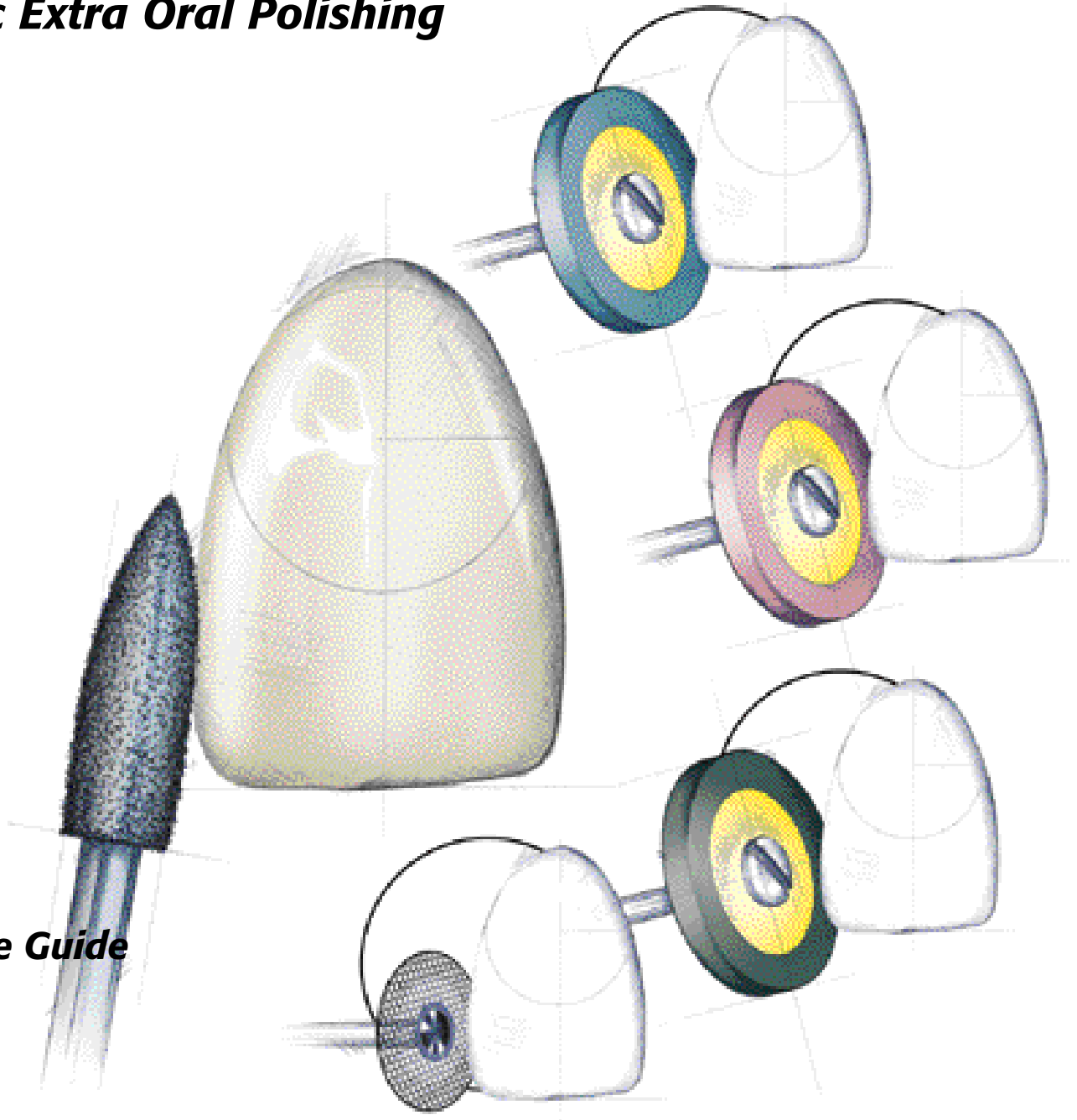


Ceramic Extra Oral Polishing

Lee Culp, CDT



Technique Guide

Consistently. Rationally. Systematically.

Buy Direct. Buy Brasseler USA.



Brasseler USA

One Brasseler Blvd.
Savannah, GA 31419

Toll Free: 800.841.4522

Phone: 912.925.8525
Fax: 888.610.1937



Buy Direct. Buy Brasseler USA.

©2002 Brasseler USA

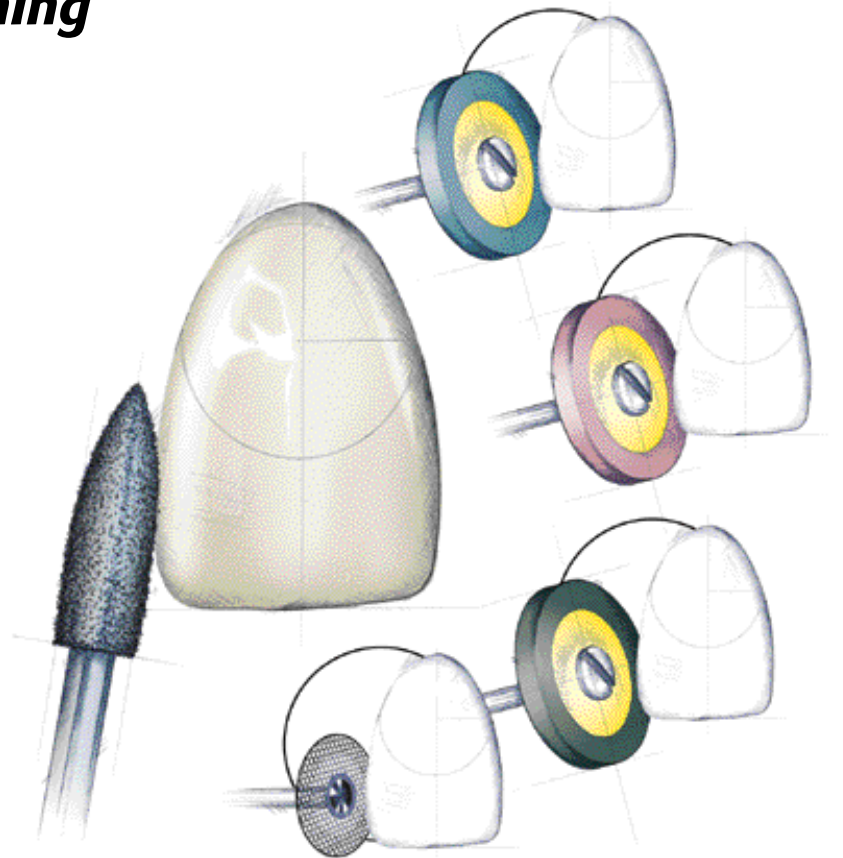


B-1821b-02.02-KPC

Ceramic Extra Oral Polishing

Lee Culp, CDT

Technique Guide



Buy Direct. Buy Brasseler USA.

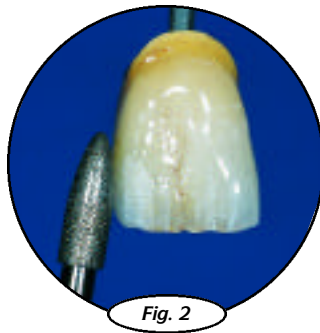
Recontouring or Adjusting Contacts

The Brasseler USA Ceramic Extra Oral Polishing Adjustment Kit was developed by Lee Culp, CDT, for minor adjusting and contouring of ceramic crowns and bridges. Instruments include the VisionFlex[®] disc for incisal embrasures, a flame shaped sintered diamond for adjustments, and Dialite[™] diamond impregnated polishers for high gloss polishing. For ease of identification and reorder, the instruments come in an autoclavable anodized aluminum bur block labeled with a silhouette and number for each instrument.

Lee Culp, CDT



Metal ceramic restoration before adjustment.



Adjustment on distal contact area using Brasseler USA 7862M-029 sintered diamond instrument.

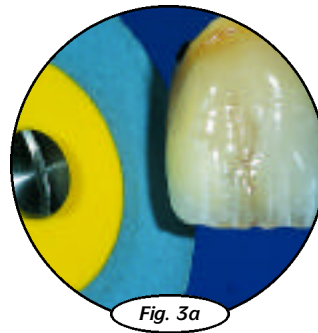


Fig. 3a

Primary polish of adjusted area with Brasseler USA Dialite[™] L26DBC blue wheel, showing dull matte finish of polish.

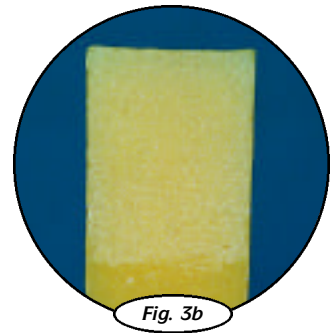


Fig. 3b

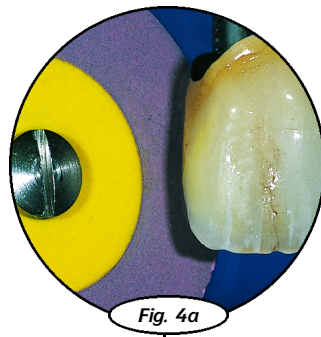


Fig. 4a

Secondary polish of adjusted area with Brasseler USA Dialite[™] L26DRM red wheel, showing semi-gloss polish.

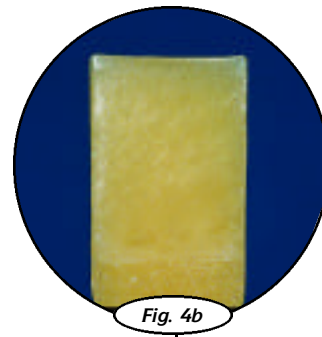


Fig. 4b

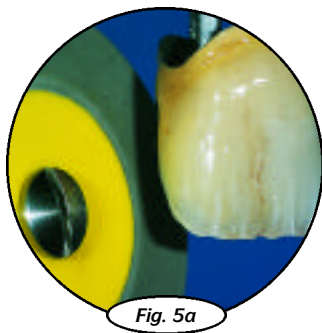


Fig. 5a

Final polish of adjusted area with Brasseler USA Dialite[™] L26DGSF grey wheel, showing a high gloss finish of polish.

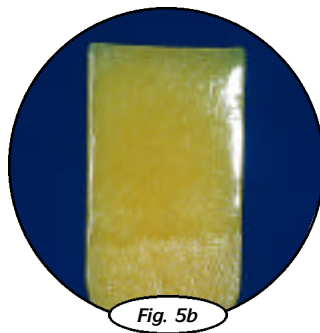


Fig. 5b

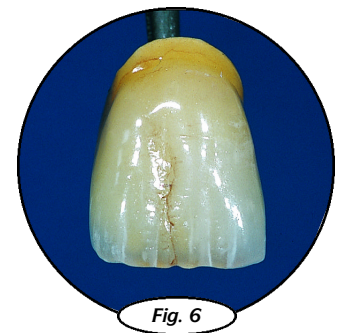
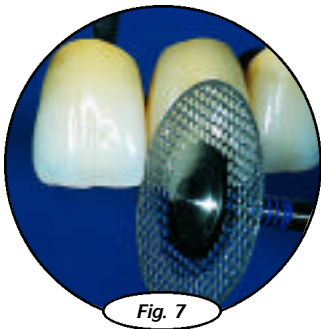


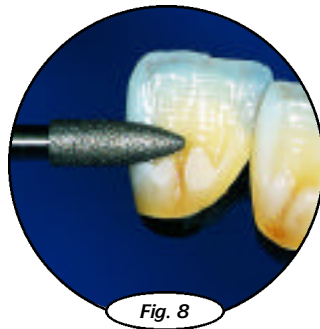
Fig. 6

Metal ceramic crown after adjustment.

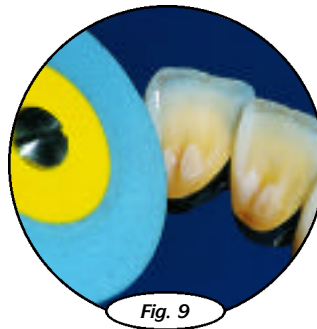
Interproximal and Occlusal Adjustment



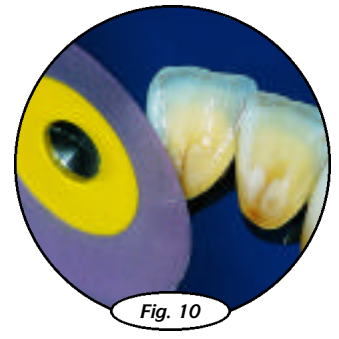
Incisal edge embrasure adjustment with Brasseler USA 934-180 VisionFlex® diamond disc.



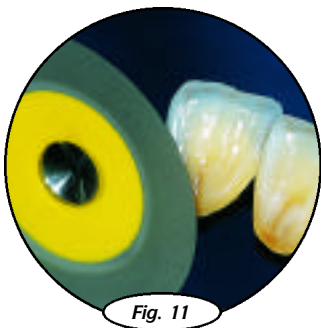
Occlusal-lingual adjustment with Brasseler USA 7862M-029 sintered diamond instrument.



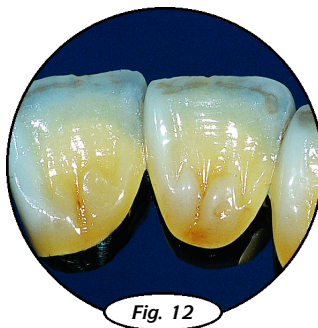
Primary polish of lingual adjustment with Brasseler USA Dialite™ L26DBC blue wheel, showing dull matte finish.



Secondary polish of lingual adjustment with Brasseler USA Dialite™ L26DRM red wheel, showing semi-gloss finish.



Final polish of lingual adjustment with Brasseler USA Dialite™ L26DGXF grey wheel, showing high gloss finish.



Lingual view of metal ceramic bridge after adjustments.

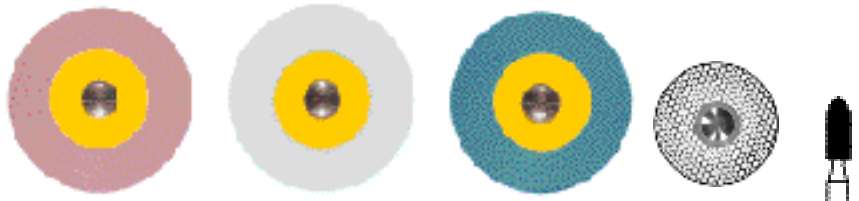


Facial view of metal ceramic bridge after adjustments.



New

341.11.701



Order No.	L26DRM	L26DGXF	L26DBC	934	7862M
Size Ø 1/10 mm	260	260	260	180	029
L mm	2.0	2.0	2.0	.15	8.0
Quantity per kit	1	1	1	1	1

Extra Oral Polishing / Ceramics Kit

Developed by Lee Culp, CDT

Straight Handpiece 11 – Ø2.35mm x 44.5mm L



Porcelain finishing and high polishing system.

