

# SDI SPECIALS

JANUARY/FEBRUARY/MARCH 2021

COMPOSITES | GLASS IONOMERS  
TOOTH WHITENING | EQUIPMENT  
CEMENTS | ADHESIVES  
ETCHANTS | SEALANTS  
AMALGAMS | ACCESSORIES

## IN OFFICE & TAKE HOME KITS

### POLA DAY

HYDROGEN PEROXIDE BASED ADVANCED TRAY TOOTH WHITENING SYSTEM

- Available in 7.5% and 9.5% hydrogen peroxide

### POLA NIGHT

CARBAMIDE PEROXIDE BASED ADVANCED TRAY TOOTH WHITENING SYSTEM

- Available in 10%, 16% and 22% carbamide peroxide

**3+1\***  
BUY 3, GET 1 FREE

**10+5\***  
BUY 10, GET 5 FREE



## POLA DISPENSER KITS

**2+1\***  
BUY 2, GET 1 FREE

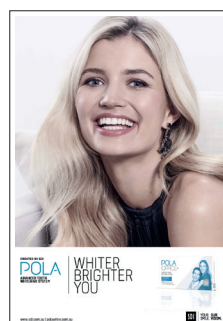
### POLA DAY CP

GREAT RESULTS IN ONLY 15 MINUTES A DAY

- 35% carbamide peroxide
- Contains fluoride



## COMPLIMENTARY MARKETING MATERIAL



POSTER OFFICE+



POLA PATIENT  
HANDOUT STAND



POLA PATIENT  
HANDOUTS

Contact your local representative to find out more.

## COMPOSITES

**5+2 BUY 5 GET 2 FREE PLUS BONUS** AURA EASYFLOW AE2 SYRINGE

### AURA BULK FILL

THE SIMPLICITY OF BULK FILLING

- One bulk fill placement up to 5mm depth of cure

### AURA EASY

STOCK LESS, DELIVER MORE

- 4 shades cover 8 VITA classical A1-D4® shades

### LUNA

- Chameleon effect



**NEW LUNA**

THE GREATEST  
EVERYDAY  
UNIVERSAL  
COMPOSITE

### AURA EASY FLOW

ULTRA UNIVERSAL RESTORATIVE MATERIAL

- Established nanohybrid filler system
- Optimal flow for cavity adaptation
- High visibility on radiographs



**ae1** | **ae2** | **ae3** | **ae4**  
A1/B1 | A2/B2 | A3/B3 | A3.5/B4

Approximate equivalence to VITA® classical shade guide

## GLASS IONOMERS

**3+1\*** BUY 3 BOXES OF **RIVA** GET 1 **FREE**  
PLUS BONUS **RIVA SC STARTER KIT A2**  
EXCLUDES RIVA STAR



## ALLOYS

**2+1**  
BUY 2 GET 1  
FREE PLUS  
BONUS AURA  
BULK REFILL  
COMPLETS

### LOJIC +

WORLDS FIRST PLATINUM  
MODIFIED SPHERICAL  
AMALGAM



### GS-80

ECONOMICAL NON-  
GAMMA 2 ADMIX ALLOY



### PERMITE

HIGH SILVER NON-  
GAMMA 2 ADMIX  
ALLOY



### AURA BULK FILL

THE SIMPLICITY OF BULK FILLING



## CEMENTS / ADHESIVES

**BUY 2, GET 1 FREE**

### SET PP

DUAL-CURED, SELF-ETCHING, SELF-  
ADHERING RESIN CEMENT

- Chemically bonds to tooth structure and substrates
- Available in capsules and a paste/paste automix syringe system (set PP)
- Fast and easy - etch, bond and fill with one component



### ZIPBOND

UNIVERSAL ADHESIVE

- Consistent bond strengths to dentin and enamel
- Wet and dry dentin bonding
- Proprietary combination of adhesive monomers including MDP
- Predictable bond strengths to indirect substrates
- Effective hybridization



COMPOSITES | GLASS IONOMERS | TOOTH WHITENING | EQUIPMENT | CEMENTS | ADHESIVES | ETCHANTS | SEALANTS | AMALGAMS | ACCESSORIES



YOUR SMILE. OUR VISION.

facebook.com/sdiusa instagram.com/sdiusa

Redeem your free goods online using this link:  
<http://www.sdi.com.au/freegoods-us>

\*Please allow 2-4 weeks for delivery. Please note offers cannot be combined. Offers cannot be used in conjunction with contract pricing. Valid on invoices dated Jan 1st - March 31st, 2021. All claims for free goods must be made within 60 days from the end of promotion date. Free products must be of equal or lesser value. Offers are valid in the US.

**SDI (North America) Inc.**  
1279 Hamilton Parkway  
Itasca, IL 60143

Toll Free 1 800 228 5166  
Fax: 630-361-9222  
[usa.canada@sdi.com.au](mailto:usa.canada@sdi.com.au)  
[www.sdi.com.au](http://www.sdi.com.au)

#### EASTERN REGION TM CONTACT

**PHILLIP ZHOU**  
PA, DE, Southern NJ, MD  
Cell: (717) 395-0599  
[Phillip.Zhou@sdi.com.au](mailto:Phillip.Zhou@sdi.com.au)  
**STEVE WISNIEWSKI**  
Michigan, Northern Indiana  
Cell: (313) 520-4114  
[Steve.Wisniewski@sdi.com.au](mailto:Steve.Wisniewski@sdi.com.au)

**MARIANNA OSIPOVA**  
NYC Metro and Northern  
New Jersey  
Cell: (718) 308-5588  
[Marianna.Osipova@sdi.com.au](mailto:Marianna.Osipova@sdi.com.au)

**MARK GUZIOR**  
MA, ME, NH, CT, VT, RI  
Cell: (603) 553-3121  
[Mark.Guzior@sdi.com.au](mailto:Mark.Guzior@sdi.com.au)

**CARRIE COOMER**  
OH, KY, Southern IN  
Cell: (937) 214-7410  
[Carrie.Coomer@sdi.com.au](mailto:Carrie.Coomer@sdi.com.au)

**KATIE BLEVINS**  
Florida S.  
Cell: (561) 358-9291  
[Katie.Blevins@sdi.com.au](mailto:Katie.Blevins@sdi.com.au)

**COURTNEY BUCZEK**  
Central/Northern IL, WI  
Cell: (630) 542-7988  
[Courtney.Buczek@sdi.com.au](mailto:Courtney.Buczek@sdi.com.au)

**JIM POTEAT**  
GA, SC, NC, TN  
Cell: (704) 995-7303  
[Jim@PoteatDentalSolutions.com](mailto:Jim@PoteatDentalSolutions.com)

**MIKE MATUCH**  
Upstate NY, Erie/Pittsburg,  
PA, WV  
Cell: (716) 913-8534  
[MichaelMatuch@yahoo.com](mailto:MichaelMatuch@yahoo.com)

**LOUIE KALOUDIS**  
MS, AL, DC, VA  
Cell: (630) 363-9224  
[Louie.Kaloudis@sdi.com.au](mailto:Louie.Kaloudis@sdi.com.au)

#### WESTERN REGION TM CONTACT

**MICHAEL WADE**  
LA, Ventura, Kern Counties,  
No. Cal, Reno, NV  
Cell: (480) 239-3502  
[Michael.Wade@sdi.com.au](mailto:Michael.Wade@sdi.com.au)

**JENNIFER BOLTON**  
O.C. San Diego, Las Vegas, HI  
Cell: (949) 413-9035  
[Jennifer.Bolton@sdi.com.au](mailto:Jennifer.Bolton@sdi.com.au)

**LORI KELLAR**  
WA, OR, AK, ID, MT  
Cell: (206) 696-1485  
[Lori.Kellar@sdi.com.au](mailto:Lori.Kellar@sdi.com.au)

**KARLYN RASMUSSEN-DODD**  
TX, OK  
Cell: (832) 928-6938  
[Karlyn.Rasmussen-dodd@sdi.com.au](mailto:Karlyn.Rasmussen-dodd@sdi.com.au)

**KAREN ZAFFINO**  
CO, UT, WY, NM, El Paso, AZ  
Cell: (720) 635-3400  
[Zaffinoenterprise@gmail.com](mailto:Zaffinoenterprise@gmail.com)

**TIM VANWYCHEN**  
MN, ND, IA, SD, NE  
Cell: (651) 231-2801  
[VanWychen@hotmail.com](mailto:VanWychen@hotmail.com)

**DOUG SCHROEDER**  
MO, KS  
Cell: (314) 422-0061  
[dsitld@charter.net](mailto:dsitld@charter.net)