

INSPIRE™



TEMPORIZATION

INSPIRE Your Patients With STRONG, ESTHETIC Provisionals

Provisional fabrication is an important aspect of every indirect restoration. The ideal provisional restoration not only gives the patient an accurate preview of the final restoration but also ensures continued tooth and tissue health, proper function and position and a natural, esthetic result.

Provisional fabrication should be easy, efficient and predictable and provisionals must be strong as well as esthetic. **INSPIRE™** from CLINICIAN'S CHOICE® is designed to provide all these ideal benefits and much more.

INSPIRE is Strong

With an ideal Elastic Modulus (3136 MPa), INSPIRE is very strong and is less likely to fracture along margins, even when tooth reduction is less than ideal.

INSPIRE's high flexural and compressive strength render it easy to trim and resistant to fracture. You'll notice **INSPIRE** feels firm, is less porous and less prone to cracks when trimming. **INSPIRE** also has a high Dimetral Tensile Strength and when coupled with its outstanding impact strength, you can be confident that **INSPIRE** provisionals will not succumb to sudden and extreme forces of mastication. **INSPIRE's** low 3.4% shrinkage prevents open margins, especially with lower incisors.

Be INSPIRED With Superior Handling and Esthetics

INSPIRE is stackable and stays where you place it, preventing over-filling of the matrix which commonly results in excess flash/finishing, and a waste of valuable chairtime. You'll love how **INSPIRE** shines and with minimal or no effort. Now you can achieve a composite-like finish in seconds.

INSPIRE's 4 available shades (B1, A1, A2 and A3.5) provide ideal translucency and fluorescence to match natural tooth structure, making it ideal for anterior cases.

Procedure Efficiency & Confidence

INSPIRE provides an efficient 40 second working time which is sufficient for single or multiple unit cases. Its mouth removal time of 1:30-2:30 minutes and a total cure time of 4:30 minutes ensures procedural efficiency.

The **INSPIRE** oxygen inhibited layer is minimal and its chemistry contains zero Bisphenol-A. Additionally, it has one of the lowest exothermic reactions in this product category at only 53°C.

10 Unit INSPIRE Case with ZERO Polishing



BEFORE



AFTER

Dentistry and photography courtesy of Dr. Danièle Larose



CLINICIAN'S CHOICE®
DENTAL PRODUCTS INC.

Distributed Exclusively by:

HENRY SCHEIN®
DENTAL

To order: 1-800-372-4346 8am-8:30pm (et) www.henryscheindental.com

INSPIRE™



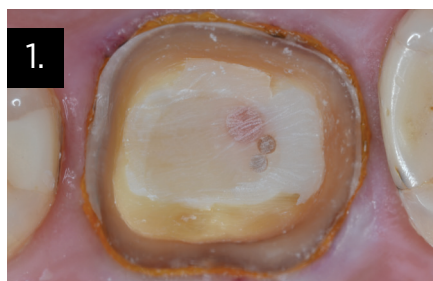
CREATING STRONG, ESTHETIC TEMPORARIES EFFICIENTLY

Compare INSPIRE'S Superior MECHANICAL AND Physical Properties

	Elastic Modulus (MPa)	Flexural Strength (MPa)	Impact Resistance (MPa)	Compressive Strength (N/mm2)	Diametral Tensile Strength (MPa)	Maximum Temperature (°C)	O ² Inhibited Layer (mg)
INSPIRE™	3136	105	76	379	62	53	39.4
Integrity™	3055	93	63	277	50	59	32.5
Integrity Multi-Cure™	3367	104	65	377	42	61	71.4
Luxatemp Plus™	2888	97	76	295	47	67	26.9
Protemp Plus™	2796	88	69	488	57	68	25.3
Structure 2™	3387	106	59	274	47	81	50
Structure 3™	2178	87	53	481	45	69	53.5

* Not a trademark of CLINICIAN'S CHOICE® Dental Products Inc. **In-House Data

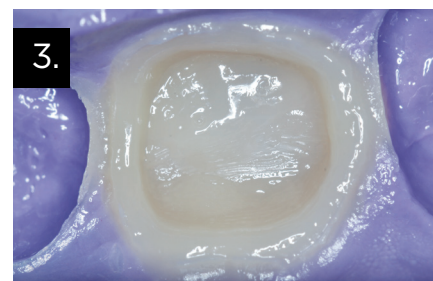
CLINICAL TECHNIQUE



Failed all ceramic restoration with endodontic treatment restored with Macro-Lock Illusion X-RO, Fibercones, and Zircoles Zirconium Nano-Filled Core Material (Clinician's Choice)



After provisional matrix fabrication using Template Ultra Quick Matrix Material and a metal TempTray (Clinician's Choice), Inspire is injected into the Template matrix. Clinical Tip: Keep the tip submersed while filling to prevent air bubbles.



The Inspire-loaded TempTray is immediately inserted over the tooth preparation and allowed to set for 1:30 minutes. Upon removal, the provisional restoration shows minimal flash, facilitating easy trimming and finishing.



The Inspire provisional crown is cemented using Cling² Resin Optimized Temporary Cement. Cling² cures in about 90 seconds and flash is easily removed without damage to the soft tissue.



The final Inspire temporary crown immediately post-insertion after minimal polishing.

INSPIRE CARTRIDGES

71g cartridge, 12 x mixing tips, instructions, MSDS

A1 (791-0028)

A2 (791-0029)

A3.5 (791-0030)

B1 (791-0031)

INSPIRE COMPLETE PROVISIONAL SYSTEM (791-0503)

4 x Posterior TempTrays,

4 x Anterior TempTrays,

1 x 50ml Template Ultra Quick Matrix Material,

1 x 10ml Inspire Esthetic Provisional Composite (A2),

1 x 5ml Cling² Resin-Optimized Temporary Cement,

mixing tips, instructions, MSDS

Dentistry courtesy of Dr. Brad Carson. Photography courtesy of Dr. Gildo Santos.



CLINICIAN'S CHOICE®
DENTAL PRODUCTS INC.

Distributed Exclusively by:

HENRY SCHEIN®
DENTAL

To order: 1-800-372-4346 8am-8:30pm (et) www.henryscheindental.com