



# PEDIATRIC & FAMILY MEDICINE SPECIALS

JULY | AUGUST | SEPTEMBER 2020



# THE NEXT GENERATION OF SDF

Riva Star with KI reduces staining, increases bond strength, and provides ionic exchange for increased fluoride.

**BUY RIVA LIGHT CURE  
OR SELF CURE  
GET 1 RIVA STAR FOR FREE**



## RIVA STAR

BIOFILM & SENSITIVITY ELIMINATOR

- Clinically tested & proven for decades
- Increases Riva GI Bond Strength
- Non-invasive - suitable for MID
- Can increase the bond strength of GIC's



## RIVA® LIGHT CURE

REGULAR & HIGH VISCOSITY, LIGHT CURED, RESIN REINFORCED GLASS IONOMER RESTORATIVE MATERIAL

- Riva Light Cure in high viscosity is easy to manipulate and sculpt
- Orange light safe tip prevents premature setting
- Great for minimally invasive dentistry (MID)

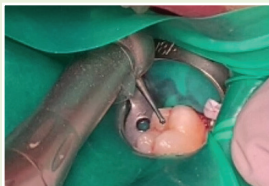


## RIVA® SELF CURE

REGULAR & HIGH VISCOSITY, SELF-CURING, TOOTH REMINERALIZING GLASS IONOMER RESTORATIVE MATERIAL

- Ideal materials for dentin replacement
- Radiopaque
- Riva SC HV is easy to shape and non-sticky

## SMART TECHNIQUE PROTOCOL



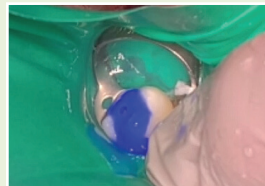
### Rubber Dam Isolation

Isolate the tooth using rubber dam isolation.



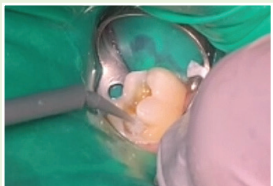
### Selective Caries Removal

Remove soft caries and ensure the dentin enamel junction is clean and free of demineralization.



### Rinse and Etch

Thoroughly rinse the tooth, and apply the conditioner (etch).



### Silver Diamine Fluoride

Apply Silver Diamine Fluoride for 60 seconds.



### Potassium Iodide

Apply Potassium Iodide for 90 seconds to precipitate out the silver ions.



### Restore

Place a Glass Ionomer Base and restore with desired composite.



### Post Operative Photo

Final Restoration two weeks later showing an esthetic outcome.



### Jarod W. Johnson Board Certified Pediatric Dentist

Dr. Jarod Johnson received his DDS degree from The University of Iowa College of Dentistry and his certificate in pediatric dentistry from the University of Nevada, Las Vegas, School of Dental Medicine. He holds a position as an adjunct assisting professor in pediatric dentistry at The University of Iowa. Dr. Johnson is the owner of Arctic Dental in Muscatine, Iowa. He is an advocate for patient centered care related to minimally invasive dentistry with an emphasis on using the best use materials and techniques for treating pediatric patients.

# COMPOSITES

## LUNA

- Nanohybrid technology for superior strength and esthetics
- Chameleon effect
- Natural fluorescence and opalescence
- High flexural strength
- Superior compressive strength

BEFORE



AFTER



Photos courtesy of Dr. José Porfirio, Venezuela

## AURA EASY FLOW

- Optimal flow for cavity adaptation
- High visibility on radiographs
- Strong mechanical properties
- Easy shade matching
- Optimized optical properties
- Stable aesthetics over time
- 4 shades Ae1, Ae2, Ae3, Ae4



THE GREATEST  
EVERYDAY  
UNIVERSAL  
COMPOSITE



BUY 10 GET 5 FREE  
BUY 3 GET 1 FREE

## AURA BULK FILL

THE SIMPLICITY OF BULK FILLING

- One bulk fill placement up to 5mm depth of cure
- 20 sec. LED light cure
- Natural-looking finish with just one universal shade
- High depth of cure without the need for a capping layer
- Easy placement in a matter of seconds



## AURA EASY

STOCK LESS, DELIVER MORE

- 4 shades cover 8 VITA classical A1-D4® shades
- Increased wear resistance and strength
- Smooth high gloss finish every time
- Non-sticky consistency makes it simple to sculpt
- Low volumetric shrinkage to offset marginal stress
- 4 universal shades to minimize inventory



# CEMENTS



## RIVA® LUTING

SELF-CURING GLASS IONOMER LUTING CEMENT

- Chemically adheres to tooth structure and metal substrates
- Very low film thickness - flows easily between restoration and tooth
- Exceptional bond strengths

2+1\* BUY 2 GET 1 FREE  
+ SUPER ETCH FREE!



## SET/SET PP

DUAL-CURED, SELF-ETCHING, SELF-ADHERING RESIN CEMENT

- Chemically bonds to tooth structure and substrates
- Available in capsules and a paste/paste automix syringe system (set PP)
- Fast and easy - etch, bond and fill with one component

# 2+1\* PROTECT YOUNG TEETH WITH RIVA PROTECT AND CONSEAL F

## RIVA® PROTECT

SELF-CURING CONVENTIONAL GLASS IONOMER USED AS A SEALANT, LINER AND SURFACE PROTECTOR

- ACP nanotechnology - supercharges remineralization
- Very high fluoride releasing and recharging ability to protect teeth from acid attacks
- Low viscosity for easy placement and pit/fissure penetration



## CONSEAL® F

LIGHT CURED FLUORIDE RELEASING RESIN PIT AND FISSURE SEALANT

- Extremely low viscosity - quickly and deeply penetrate small pits and tight fissures
- Accurate and controlled delivery with an ultrafine tip



## ALL ALLOYS 2+1\*

BUY 2, GET 1 FREE  
JARS OF 500 CAPS  
BOXES OF 50 CAPS



### PERMITE

HIGH SILVER NON-GAMMA 2 ADMIX ALLOY

- Superior handling characteristics
- Void-free restorations with no marginal leakage



### LOJIC+

WORLD'S FIRST PLATINUM MODIFIED SPHERICAL AMALGAM

- Creamy consistency, soft packing and smooth carving
- Very high compressive strength
- Superior marginal adaptation



### GS-80

ECONOMICAL NON-GAMMA 2 ADMIX ALLOY

- High early compressive strength
- Great corrosion resistance
- Excellent marginal sealing

# SMART TECHNIQUE BUNDLE

- 1 X SUPER ETCH BULK 12GM SYRINGE
- 1 X RIVA STAR KIT
- 1 X RIVA SELF CURE STARTER KIT REG A2
- 1 X ZIPBOND
- 1 X LUNA A2 20 COMPLETS

**ONLY \$399**

7750074 RIVA Smart Technique Package - Option A (Bottle)  
7750075 RIVA Smart Technique Package - Option B (Unidose)

\*Smart Technique Bundle can be drop shipment, please call SDI Customer Service for more details.



COMPOSITES | GLASS IONOMERS | TOOTH WHITENING | EQUIPMENT | CEMENTS  
ADHESIVES | ETCHANTS | SEALANTS | AMALGAMS | ACCESSORIES

Redeem your free goods online using this link:  
<http://www.sdi.com.au/freegoods-us>

[facebook.com/sdiusa](https://www.facebook.com/sdiusa) [instagram.com/sdiusa](https://www.instagram.com/sdiusa)

\*Please allow 2-4 weeks for delivery. Please note offers cannot be combined. Offers cannot be used in conjunction with contract pricing. Valid on invoices dated July 1st - Sept 30th, 2020. All claims for free goods must be made within 60 days from the end of promotion date. Free products must be of equal or lesser value. Offers are valid in the US.



YOUR  
SMILE.  
OUR  
VISION.

SDI (North America) Inc.  
1279 Hamilton Parkway  
Itasca, IL 60143

Toll Free 1 800 228 5166  
Fax: 630-361-9222  
[usa.canada@sdi.com.au](mailto:usa.canada@sdi.com.au)  
[www.sdi.com.au](http://www.sdi.com.au)

#### EASTERN REGION TM CONTACT

**PHILLIP ZHOU**  
PA, DE, Southern NJ, MD  
Cell: (717) 395-0599  
[Phillip.Zhou@sdi.com.au](mailto:Phillip.Zhou@sdi.com.au)

**STEVE WISNIEWSKI**  
Michigan, Northern Indiana  
Cell: (313) 520-4114  
[Steve.Wisniewski@sdi.com.au](mailto:Steve.Wisniewski@sdi.com.au)

**MARIANNA OSIPOVA**  
NYC Metro and Northern New Jersey  
Cell: (718) 308-5588  
[Marianna.Osipova@sdi.com.au](mailto:Marianna.Osipova@sdi.com.au)

**MARK GUZIOR**  
MA, ME, NH, CT, VT, RI  
Cell: (603) 553-3121  
[Mark.Guzior@sdi.com.au](mailto:Mark.Guzior@sdi.com.au)

**CARRIE COOMER**  
OH, KY, Southern IN  
Cell: (937) 214-7410  
[Carrie.Coomer@sdi.com.au](mailto:Carrie.Coomer@sdi.com.au)

**KATIE BLEVINS**  
Florida  
Cell: (561) 358-9291  
[Katie.Blevins@sdi.com.au](mailto:Katie.Blevins@sdi.com.au)

**BRITNEY NEAL**  
Central/Northern IL, WI  
Cell: (630) 542-7988  
[Britney.Neal@sdi.com.au](mailto:Britney.Neal@sdi.com.au)

**JIM POTAT**  
GA, SC, NC, TN  
Cell: (704) 995-7303  
[Jim@Pteatdentalsolutions.com](mailto:Jim@Pteatdentalsolutions.com)

**MIKE MATUCH**  
Upstate NY, Erie/Pittsburg, PA, WV  
Cell: (716) 913-8534  
[MichaelMatuch@yahoo.com](mailto:MichaelMatuch@yahoo.com)

#### WESTERN REGION TM CONTACT

**AMBERLY MAWSON**  
LA, Ventura, Kern Counties  
Cell: (626) 390-9238  
[AmberlyMawson@sdi.com.au](mailto:AmberlyMawson@sdi.com.au)

**DANA MUSCATELLO**  
No. Cal, Reno, NV  
Cell: (408) 893-8728  
[Dana.Muscattello@sdi.com.au](mailto:Dana.Muscattello@sdi.com.au)

**JENNIFER BOLTON**  
DC, San Diego, Las Vegas, HI  
Cell: (949) 413-9035  
[Jennifer.Bolton@sdi.com.au](mailto:Jennifer.Bolton@sdi.com.au)

**LORI KELLAR**  
WA, OR, AK, ID, MT  
Cell: (206) 696-1485  
[Lori.Kellar@sdi.com.au](mailto:Lori.Kellar@sdi.com.au)

**KARLYN RASMUSSEN-DODD**  
TX, OK  
Cell: (832) 928-6938  
[Karlyn.Rasmussen-dodd@sdi.com.au](mailto:Karlyn.Rasmussen-dodd@sdi.com.au)

**KAREN ZAFFINO**  
CO, UT, WY, NM, El Paso, AZ  
Cell: (720) 635-3400  
[Zaffinoenterprise@gmail.com](mailto:Zaffinoenterprise@gmail.com)

**TIM VANWYCHEN**  
MN, ND, IA, SD, NE  
Cell: (651) 231-2801  
[VanWychen@hotmail.com](mailto:VanWychen@hotmail.com)

**DOUG SCHROEDER**  
MO, KS  
Cell: (314) 422-0061  
[dslltd@charter.net](mailto:dslltd@charter.net)