

COLD FLOWABLE GUTTA-PERCHA



GuttaFlow[®] 2

Superior Strength of a Monobloc

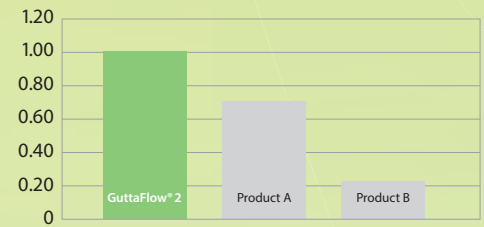
 COLTENE



Sealer and gutta-percha in one root canal filling material

GuttaFlow 2 is a novel filling system for root canals that combines two products in one; sealer and gutta-percha in powder form with a particle size of less than 30µm.

SBS/MPa*

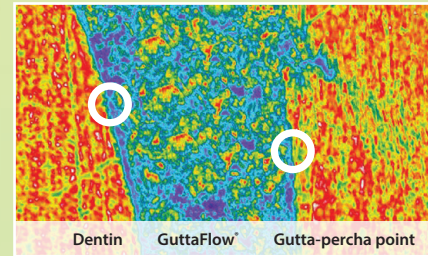


* Source: Internal measurements



Tight seal due to expansion and adhesion

GuttaFlow 2 is the first flowable, non-heated gutta-percha that does not shrink but expands slightly by 0.2%. Furthermore, GuttaFlow 2 has a very good adhesion to Gutta-percha points and dentin walls. This combination of expansion and adhesion creates an excellent seal.



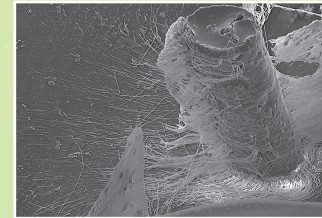
GuttaFlow® shows an excellent fit to dentin and gutta-percha.

Photo: Prof. Jorge and Norma Uribe Echevarría, Faculty of Odontology, Córdoba, Argentina



Excellent flow properties

GuttaFlow 2 is thixotropic, the viscosity diminishes under pressure, and therefore it flows into the smallest canals during placement of master point and optional auxiliary points. This feature allows for a three-dimensional obturation without condensation.



Dentin tubules filled with GuttaFlow. Dentin had been removed with acid.

Photo: Prof. Halina Pawlička, University of Lodz, and Dr. Johannes Ebert, University of Erlangen



Solubility of 0.0%*

Through contact with body fluids, materials may dissolve over the years, creating space for bacterial colonization. Most standard root canal sealer materials are soluble to a varying degree. The solubility of GuttaFlow 2 is virtually zero. Tests according to ISO 6876:2001 show a solubility of 0.0%. This results in a dimensionally stable and impervious root canal filling.

* acc. to ISO 6876:2001 Dental root canal sealing materials
Source: NIOM Norwegian Institute for Dental Material Testing



Biocompatible

Since endodontic filling materials remain in the body for many years, it is particularly important that there is no adverse effect on the surrounding tissue. Conventional materials demonstrate toxic characteristics ranging from "nontoxic mildly" to "severely toxic." Clinical studies show GuttaFlow to be biocompatible.

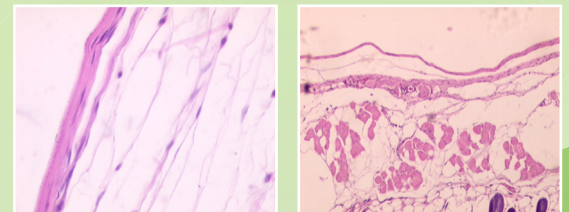


Photo: Prof. Gianluca Gambarini, University of Rome, Italy.



Optimum protection

GuttaFlow 2 contains micro-silver that provides optimum protection against re-infection of the root canal. The chemical form and concentration of the silver does not lead to any corrosion or discoloration of GuttaFlow 2 under clinical conditions.



COLTENE Covers the Entire Endo Procedure

COLTENE offers a complete line of endodontic products for the root canal procedure, from diagnosis through restoration.

Visit coltene.com/products/endodontics to view the entire endo line.

GuttaFlow[®] 2

Cold Flowable Gutta-Percha

Syringe or capsule

The simple way to root canal obturation



10 - 15 min
Working time

25 - 30 min
Curing time

- > Ready to use – no triturator required for syringe*
- > Easy handling
- > Dispenses just the quantity required
- > Homogeneously and hygienically mixed and free of air bubbles

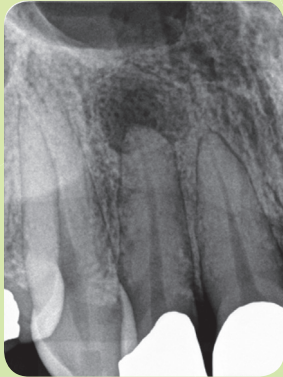
*Capsules require triturator

Clinically Tested Through and Through

Successful healing with **GuttaFlow**

Clinical study

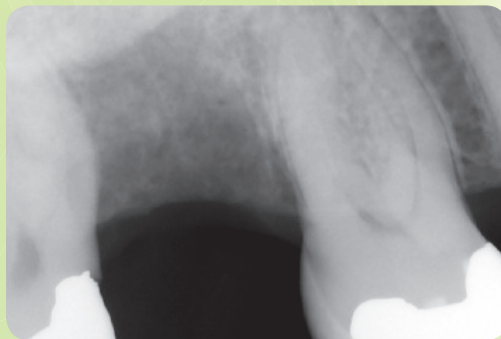
Clinical investigations on the conventional GuttaFlow are organized in the framework of a multi-center study under the direction of NIOM (Norwegian Institute for Dental Material Testing) and conducted in clinics in Germany, Norway and the US. The preliminary closing study report shows excellent healing results. On the basis of the PAI Scoring system, success rates of 0.7 – 0.8 were measured which have been documented over a period of one year.



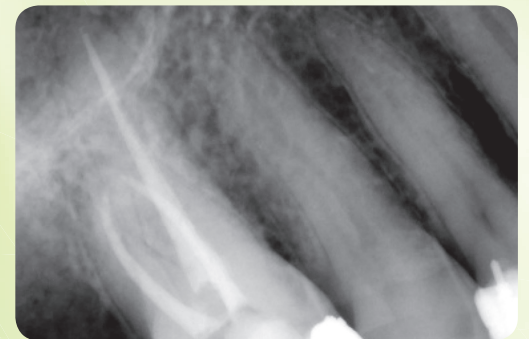
Preop

Clinical cases

Proximal Crack tooth # 16, instrumented with HyFlex[®], canals filled with GuttaFlow.



Preop

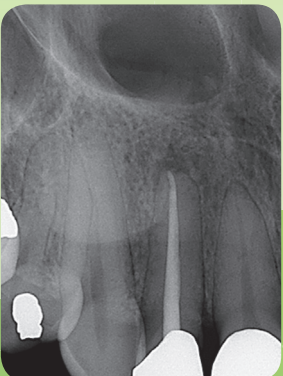


Postop

Photos: Prof. Dr. Ricardo Caicedo, University of Louisville, USA



Obturation



2 months

Photos: Prof. Dr. Ricardo Caicedo, University of Louisville, USA

Root canals prepared with HyFlex CM[®] and obturated with GuttaFlow.



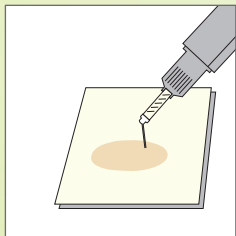
Photos: Dr. C. A. Siddons, North Yorkshire, Great Britain

Further studies

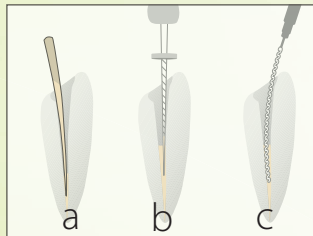
A wide range of further studies on GuttaFlow has already been conducted.

Easy, Fast and Safe in the Root Canal

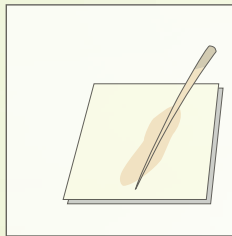
Syringe



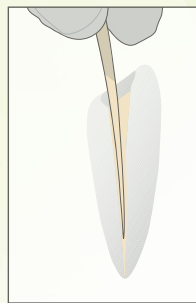
STEP 1
Slight pressure on the plunger and premixed material is dispensed from the tip.



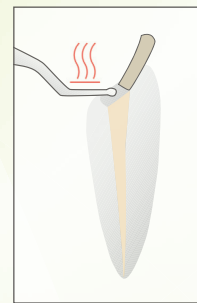
STEP 2
Either insert GuttaFlow 2 into the root canal with the master point (a), the last used apical file (b) or a lentulo spiral (c).



STEP 3
Coat the masterpoint with sufficient GuttaFlow 2 and set the apical stop. Depending on the clinical situation accessory gutta-percha points can be coated and inserted. GuttaFlow 2 combines sealer and gutta-percha in one product, the use of any sealers is not required. No lateral or vertical condensation is necessary.

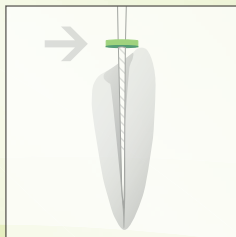


STEP 4
Slowly insert the master point permanently. Depending on the clinical situation accessory gutta-percha points can be coated and inserted. GuttaFlow 2 combines sealer and gutta-percha in one product, the use of any sealers is not required. No condensation is necessary.

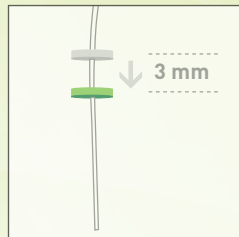


STEP 5
Sear off the master point with a heated hand instrument.

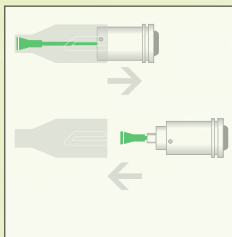
Capsule



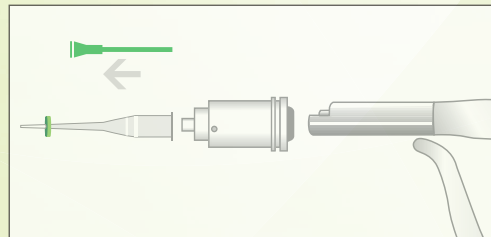
STEP 1
Determination of the working length.



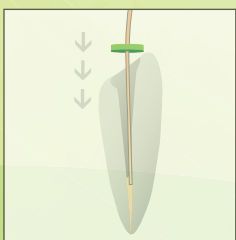
STEP 2
Move the green rubber stop 3 mm down towards the tip opening.



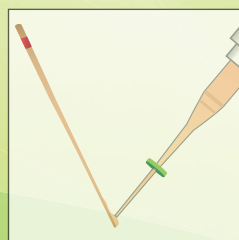
STEP 3
Push the cap down over the capsule and then remove it. Mix GuttaFlow 2 (capsule) for 30 sec. in a triturator.



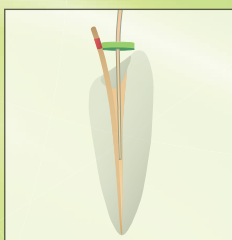
STEP 4
Remove the green activation pin from the capsule, twist the pre-set canal tip with endo stop and insert the capsule into the dispenser.



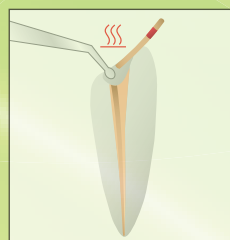
STEP 5
Dispense GuttaFlow 2 into the canal until you can see the material.



STEP 6
Then coat the masterpoint with GuttaFlow 2.



STEP 7
Then permanently place the master point and fill the remaining canal space with GuttaFlow 2.



STEP 8
Finally shorten the master point with a hot instrument.

GuttaFlow 2

Order Information - Capsule

Catalog Number	Description	Package Size
60013702	GuttaFlow 2 Intro Kit (Capsules) 20 GuttaFlow 2 capsules, 20 canal tips and stops, 3 Adapters for RotoMix, 1 dispenser, 60 Gutta-percha greater taper points 0.04 20-45	
60013704	GuttaFlow 2 capsules Canal tips and stops	20 of each



Order Information - Syringe

Catalog Number	Description	Package Size
60013701	GuttaFlow 2 Standard Set 1 dual-barrel syringe, 12 mixing tips, 1 mixing pad	
60013745	Dual-barrel syringe refill	1
60013719	Mixing tips refill	24



Accessories

Catalog Number	Description	Package Size
60013707	GuttaFlow 2 dispenser	1
349132	Canal tips and stops	20
349134	Combi tips and stops	20
349133	Adapters and RotoMix™	3

* RotoMix™ is not a trademark of Coltène/Whaledent



Mixing Tips for Veterinary

Catalog Number	Description	Package Size
60019974	GuttaFlow 2 mixing tips for veterinary - 17ga	20
60019975	GuttaFlow 2 mixing tips for veterinary - 20ga	20



Coltène/Whaledent Inc.
235 Ascot Parkway
Cuyahoga Falls, OH 44223 / USA
Tel. USA & Canada + 1 800 221 3046
+ 1 330 916 8800
Fax +1 330 645 8704
info.us@coltene.com

Coltène/Whaledent AG
Feldwiesenstrasse 20
9450 Altstätten / Switzerland
Tel. +41 (0)71 757 53 00
Fax +41 (0)71 757 53 01
info.ch@coltene.com

Coltène/Whaledent GmbH + Co. KG 
Raiffeisenstrasse 30
89129 Langenau / Germany 
Tel. +49 (0)7345 805 0
Fax +49 (0)7345 805 201
info.de@coltene.com

 **COLTENE**

coltene.com

P/N 30588D 01.19