

# IPS Empress® Direct.

The only Direct Composite  
that can be called Empress!

Confidence

Reliability

Esthetics



## IPS Empress® Direct

Direct Esthetic Composite



The esthetics of a ceramic with the convenience of composite.

# IPS Empress® System

A time-tested system ... with new possibilities



For nearly 20 years, the name IPS Empress has been associated with the highest level of esthetics in the reproduction of natural tooth characteristics. With more than 40 million restorations having been fabricated with the material to date, the system has gained a reputation for producing long-lasting, natural-looking results and maintaining high quality standards. Through the years, the IPS Empress System has been continuously further developed to keep abreast of the latest trends. As a result, decisive enhancements have been made with regard to its esthetics and function and its processing properties.

In 2004, the product portfolio was further expanded and optimized by introducing the new **IPS Empress Esthetic** pressable ceramic.




Since **IPS Empress CAD** was launched in 2006, the popular IPS Empress material can also be processed with state-of-the-art CAD/CAM technology – even directly at the chairside.

With the introduction of **IPS Empress Direct** in 2009, a product was added to the IPS Empress range that combines the esthetics of a ceramic with the convenience of composite.

In 2010, the IPS Empress portfolio was extended to include **IPS Empress Direct Flow**, which consists of three special flowable Effect shades. These materials allow individual optical effects and lifelike anatomical characteristics to be achieved.

## IPS Empress System:

- Confidence
- Reliability
- Esthetics

IPS Empress® System		
DENTAL TECHNICIAN	CAD/CAM USER	DENTIST
<b>IPS Empress Esthetic</b>	<b>IPS Empress CAD</b>	<b>IPS Empress Direct</b>
		
Lab-fabricated ceramic restorations	Ceramic restorations fabricated in the lab or at the chairside	Direct composite restorations

# IPS Empress® Direct

The esthetics of a ceramic with the convenience of composite



IPS Empress Direct is a universal nano-hybrid filling material for direct esthetic restorative procedures. IPS Empress Direct provides a high gloss polish and the lifelike opacity, fluorescence and opalescence that is required to fabricate beautiful and naturally esthetic restorations with remarkable efficiency. The three special flowable Effect materials of IPS Empress Direct Flow enable individual optical effects and the anatomical features of anterior teeth to be recreated in a lifelike fashion.

Dental professionals, researchers and color specialists worked together to develop IPS Empress Direct's new resin technology maximizing handling characteristics, physical properties and uncompromised shade match. From a chemical standpoint, the filler particles used in IPS Empress Direct consist of the same basic components as IPS Empress ceramic. Therefore, IPS Empress Direct is the ideal composite for use in combination with IPS Empress ceramics, because it allows esthetic, natural-looking direct restorations to be created.

The IPS Empress System continues to be synonymous with highly esthetic restorations, giving even your most discerning patients the radiant smiles they desire.

## IPS Empress Direct:

The only Direct Composite that can be called Empress!

- Exceptional handling
- Simplified application
- True-to-nature shades
- Superior polish



*Dr Arnd Peschke, Ivoclar Vivadent AG, Liechtenstein*

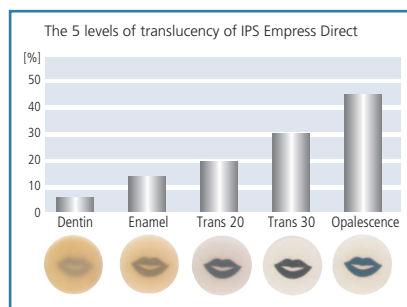
# IPS Empress® Direct

The IPS Empress Direct universal composite system offers 32 shades and 5 levels of translucency. The true-to-nature shades and opacities result in beautiful, natural-looking restorations.

## TRANSLUCENCY AND OPACITY

Like natural dentin, the IPS Empress Direct Dentin shades exhibit higher opacity and more opacous saturated chroma than the Enamel materials. They support the basic color of the tooth structure from within. The translucency of the Enamel materials has been adjusted to diffuse the dentinal substrate. Further gradations in translucency are achieved with the Trans 20, Trans 30 and Opal shades.

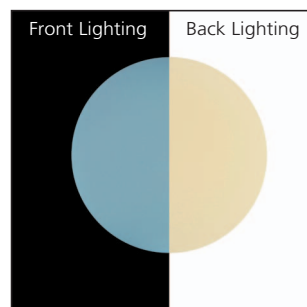
The well-balanced and mutually complementing translucencies of the IPS Empress Direct Dentin and Enamel materials give you the power to create exceptional esthetics with accurate color every time.



## NEW OPALESCENT SHADE

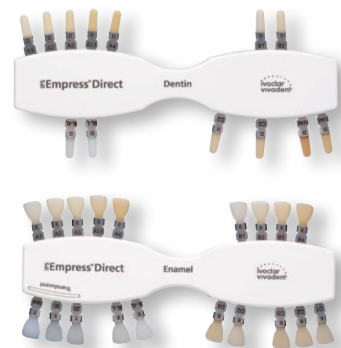
Opalescence is evident in the incisal area of natural teeth. In simple terms, this optical effect is based on the different ways in which long waves (red) and short waves (blue) of light are scattered. If a tooth is examined in incidental light it appears to have a bluish tinge, while in transmitted light this color changes to reddish-orange.

This effect has to be imitated with the corresponding materials in the restoration of teeth.



## QUICK AND ACCURATE SHADE MATCH

Two autoclavable shade guides depict the various shades and translucency levels of the IPS Empress Direct system. As with the IPS Empress all-ceramic materials, the shade tabs are made of high quality ceramic to provide long term stability for consistent shade match over time.



## COMPETENCE IN COMPOSITES



OptraDam® Plus

Excite® F



IPS Empress® Direct

Syntac®





## HIGH LUSTER POLISH

IPS Empress Direct has an even distribution of filler particles which quickly and easily polish to a long-lasting lustrous shine. It has similar polishing characteristics to both IPS Empress Esthetic and IPS Empress CAD. The polish is also retained similar to the gloss retention of a microfilled composite.

## FLUORESCENCE OF NATURAL TEETH

Fluorescence is produced by special pigments, which absorb energy from UV light and immediately emit it as visible light.

We find these pigments in the dentin and we calibrate the IPS Empress system to produce the effect of natural fluorescence.

## SPECIAL FLOWABLE EFFECT SHADES

IPS Empress Direct Flow ideally complements the IPS Empress Direct range of materials. They allow the specific individual characteristics of natural teeth to be reproduced. With Trans Opal, the natural opalescence of incisal edges can be reliably mimicked, while Trans 30 enables lifelike translucency to be achieved. Bleach XL mainly serves to create customized, true-to-nature characteristics such as fluorosis effects.

The three Effect materials offer optimum surface affinity while remaining stable. Due to the material's consistency, restorations can be conveniently sculpted and contoured with either a spatula or brush.

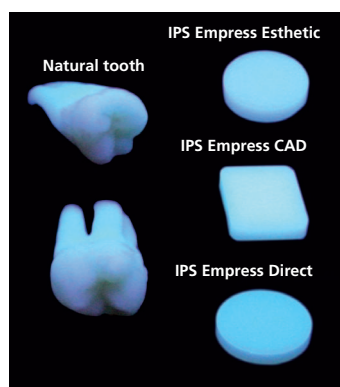


Before

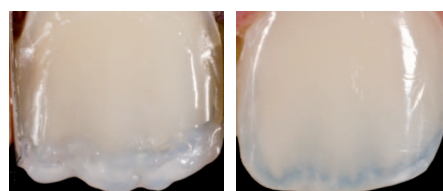


After

*Dr. Arnd Peschke, Ivoclar Vivadent AG, Liechtenstein*



Fluorescent effect



Application of Trans Opal Flow

Final result after high gloss polishing

*Dr Eduardo Mahn, Saudi Arabia*



IPS Empress® Direct Flow

bluephase® G2

Astropol® and Astrobrush®

# IPS Empress® Direct

Layer by layer to true-to-nature esthetics

With the IPS Empress Direct system you get very natural results. Due to perfectly matched Dentin and Enamel shades and calibrated translucencies, simply replace what you have taken

away. Replace dentin with the corresponding Dentin shade determined by the IPS Empress Direct shade guide. Then do the same with the enamel.

With IPS Empress Direct, there is no need for a “recipe”.



**Step 1:**  
Tooth preparation.



**Step 2:**  
Match and replace the dentin with the appropriate Dentin shade (eg A2 Dentin).



**Step 3:**  
Replace the enamel with the appropriate Enamel shade (eg A2 Enamel).



**Step 4:**  
Finish and polish to a high luster (eg with Astropol and Astrobrush)

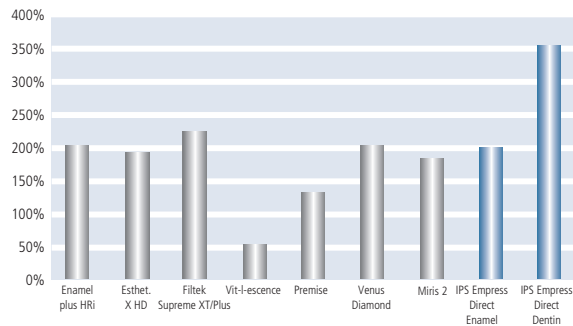
# IPS Empress® Direct



# IPS Empress® Direct

The Direct Composite that simplifies your work

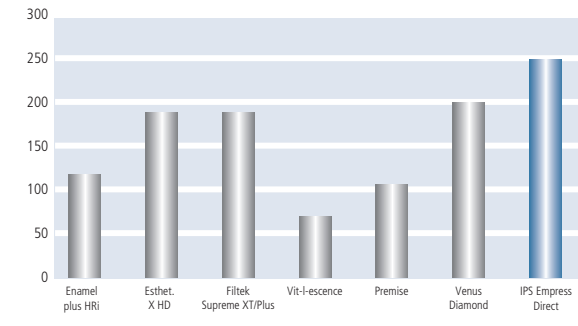
## RADIOPACITY [%AI]



In-house study, R&D, Ivoclar Vivadent AG, Schaan (determined according to ISO 4049), February 2009  
 Enamel plus HRI (Micerium) b.2008004416; Esthet.X HD (Dentsply) b.00808251; Filtek Supreme XT (3M Espe) b.7EC;  
 Miris2 (Coltene) b.0156133; Venus Diamond (Heraeus Kulzer) b.010021; Vit-I-escence (Ultradent) b.B3RLN;  
 Renamel Microfill (Cosmesdent) b.080301H; Premise (Kerr Hawe) b.3080533

While the radiopacity of IPS Empress Direct is 350% AI, natural dentin has a radiopacity of 100% AI. This difference ensures a sound diagnosis.

## WORKING TIME



In-house study, R&D, Ivoclar Vivadent AG, Schaan (determined according to ISO 4049), February 2009  
 Enamel plus HRI (Micerium) b.2008004416; Esthet.X HD (Dentsply) b.0808251; Filtek Supreme XT (3M Espe) b.7EP;  
 Venus Diamond (Heraeus Kulzer) b.010021; Vit-I-escence (Ultradent) b.B3RLN; Premise (Kerr Hawe) b.3080533

As IPS Empress Direct is considerably less sensitive to light, also to operatory light, than other comparable materials, it provides adequate time to carefully sculpt the restoration.

## RESTORATION WITH OPALESCENT EFFECT

Dr. Markus Lenhard, Switzerland



Preoperative situation: Fracture of the distal incisal edges of the central incisors



Application of the bonding agent



Reconstruction of the palatal wall by means of the "finger tip technique"



Application of Dentin material



Placement of the facial Enamel layer



Postoperative situation after 2 weeks

# Delivery Forms

## IPS Empress Direct

### Syringes



#### 627218 IPS Empress Direct Basic Kit

- 8 Syringes (1 x 3 g each shade)  
Dentin: A1, A2, A3  
Enamel: A1, A2, A3  
Opalescent, Trans 30
- 1 Enamel/Trans Shade Guide
- 1 Dentin Shade Guide
- 1 Empress Direct Pad
- 1 Clinical Guide

#### IPS Empress Direct Syringe Refills (1 x 3g each)

<b>627220</b>	A1 Dentin	<b>627235</b>	A3.5 Enamel
<b>627221</b>	A2 Dentin	<b>627236</b>	A4 Enamel
<b>627222</b>	A3 Dentin	<b>627237</b>	B1 Enamel
<b>627624</b>	A3.5 Dentin	<b>627238</b>	B2 Enamel
<b>627223</b>	A4 Dentin	<b>627239</b>	B3 Enamel
<b>627224</b>	IVA5 Dentin	<b>627240</b>	B4 Enamel
<b>627225</b>	IVA6 Dentin	<b>627241</b>	C1 Enamel
<b>627226</b>	B1 Dentin	<b>627242</b>	C2 Enamel
<b>627227</b>	B2 Dentin	<b>627243</b>	C3 Enamel
<b>627228</b>	C3 Dentin	<b>627244</b>	D2 Enamel
<b>627229</b>	D2 Dentin	<b>627245</b>	D3 Enamel
<b>627230</b>	Bleach L Dentin	<b>627246</b>	Bleach L Enamel
<b>627231</b>	Bleach XL Dentin	<b>627247</b>	Bleach XL Enamel
<b>627232</b>	A1 Enamel	<b>627248</b>	Trans 20
<b>627233</b>	A2 Enamel	<b>627249</b>	Trans 30
<b>627234</b>	A3 Enamel	<b>627250</b>	Opalescent

### Cavifil



#### 627217 IPS Empress Direct Cavifil Basic Kit

- 80 Cavifils (10x.20g each shade)  
Dentin: A1, A2, A3  
Enamel: A1, A2, A3  
Opalescent, Trans 30
- 1 Enamel/Trans Shade Guide
- 1 Dentin Shade Guide
- 1 Empress Direct Pad
- 1 Clinical Guide

#### IPS Empress Direct Cavifil Refills (10 x 0.2g each)

<b>627258</b>	A1 Dentin	<b>627273</b>	A3.5 Enamel
<b>627259</b>	A2 Dentin	<b>627274</b>	A4 Enamel
<b>627260</b>	A3 Dentin	<b>627275</b>	B1 Enamel
<b>627623</b>	A3.5 Dentin	<b>627276</b>	B2 Enamel
<b>627261</b>	A4 Dentin	<b>627277</b>	B3 Enamel
<b>627262</b>	IVA5 Dentin	<b>627278</b>	B4 Enamel
<b>627263</b>	IVA6 Dentin	<b>627279</b>	C1 Enamel
<b>627264</b>	B1 Dentin	<b>627280</b>	C2 Enamel
<b>627265</b>	B2 Dentin	<b>627281</b>	C3 Enamel
<b>627266</b>	C3 Dentin	<b>627282</b>	D2 Enamel
<b>627267</b>	D2 Dentin	<b>627283</b>	D3 Enamel
<b>627268</b>	Bleach L Dentin	<b>627284</b>	Bleach L Enamel
<b>627269</b>	Bleach XL Dentin	<b>627285</b>	Bleach XL Enamel
<b>627270</b>	A1 Enamel	<b>627286</b>	Trans 20
<b>627271</b>	A2 Enamel	<b>627287</b>	Trans 30
<b>627272</b>	A3 Enamel	<b>627288</b>	Opalescent

## IPS Empress Direct Flow

### IPS Empress Direct Flow Refills

- 1 1.8 g Syringe
- 5 Cannula Tips

- 635341** Bleach XL
- 635342** Opalescent
- 635343** Trans 30



### Shade Guides & Accessories

- 627214** Empress Direct Shade Guide Dentin
- 627215** Empress Direct Shade Guide Enamel
- 628369** Empress Direct Pad



This is a product from our "Composites" competence field. Products from this field are optimally coordinated with each other.

100% CUSTOMER SATISFACTION  
GUARANTEED!

[ivoclarvivadent.com](http://ivoclarvivadent.com)

©2011 Ivoclar Vivadent, Inc.  
IPS Empress, Astropol, Astrobrush, OptraDam, Tetric, Excite, Syntac and bluephase are registered trademarks of Ivoclar Vivadent.  
637141 Rev.1 1/2011

**United States**  
175 Pineview Drive  
Amherst, NY 14228  
716.691.0010  
800.533.6825  
Fax: 716.691.2285  
mail@ivoclarvivadent.com

**Canada**  
2785 Skymark Avenue, Unit 1  
Mississauga, Ontario L4W 4Y3  
905.238.5700  
800.263.8182  
Fax: 905.238.5711  
mail@ivoclarvivadent.com

**ivoclar vivadent**  
passion vision innovation