

SOFRELINER TOUGH[®]

High-quality Soft Denture Reline Material



DENTAL ADVISOR
TOP AWARD

**DENTURE
RELINING
MATERIAL**

Long-Lasting Comfort for Up to 2 years

SOFRELINER TOUGH®

Sofreliner Tough® is a multi-award winning, self-cure chairside soft denture reline material. Applied in only one short and simple procedure, Sofreliner Tough combines the comfort of a soft denture reline with long-term durability for up to two years, and excellent adhesion, as well as stain and odor resistance.

Outstanding product benefits

- ✓ **Plasticizer - free**
- ✓ Long lasting comfort for up to 2 years
- ✓ Consistent softness
- ✓ Up to 40% less waste than competing brands with smaller mixing tips
- ✓ Strong adhesion to the denture
- ✓ Less discoloration/ higher stain resistance
- ✓ Bacteria, plaque and odor resistance
- ✓ Auto dispensing/no hand mixing composition



Soft & Medium Accommodate All Soft Reline Cases



Sofreliner Tough S (Soft)

- Lasts up to 1.5 years
- Shore A hardness: 24



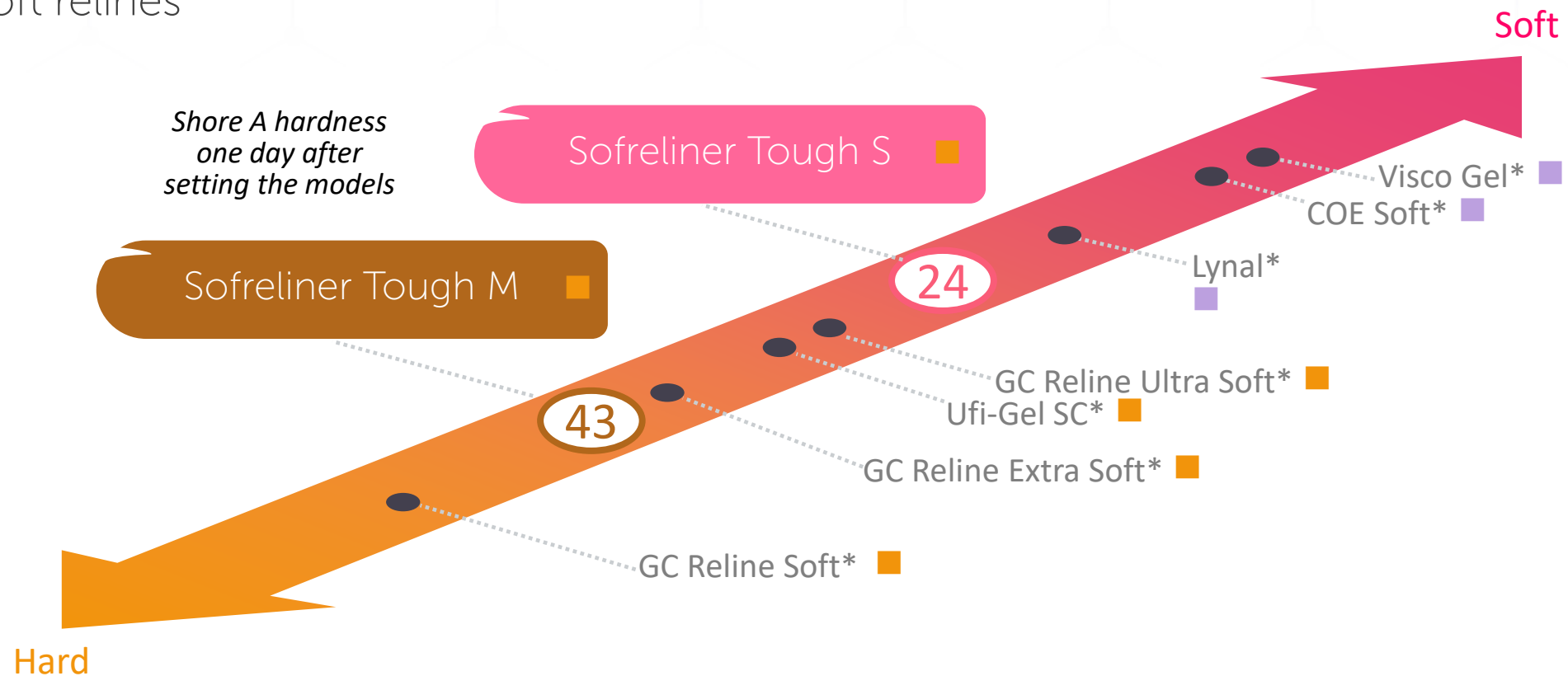
Sofreliner Tough M (Medium)

- Lasts up to 2 years
- Shore A hardness: 43

INDICATIONS	SOFRELINER TOUGH S	SOFRELINER TOUGH M
Irritated Tissue	✓	
After Surgery or Extraction	✓	
Following Implant Procedures	✓	
Sharp Ridges of Alveolar	✓	✓
Atrophic Oral Mucosa	✓	✓
Major Undercuts	✓	✓
Maxillary/Mandibular Tori	✓	✓
Overdenture	✓	✓
Pain Relief	✓	✓
Improved Suction	✓	✓
First Time Denture Wearers	✓	✓

Optimally Formulated

Sofreliner Tough® has two optimally formulated versions also provide simplified treatment options and higher quality results – from short-term tissue conditioning to long-term soft relines

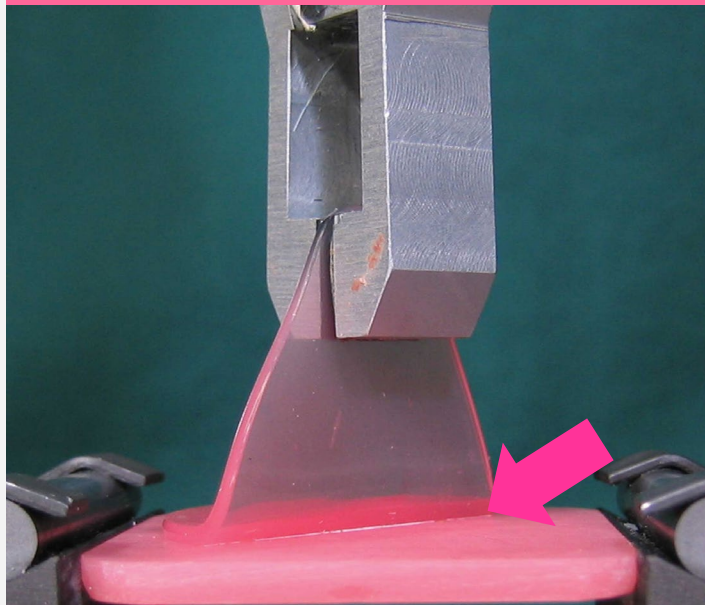


Incredible Adhesion Strength

Thanks to its strong adhesive primer, **Sofreliner Tough®** exhibits a strong resistance to peeling not seen in other brands.

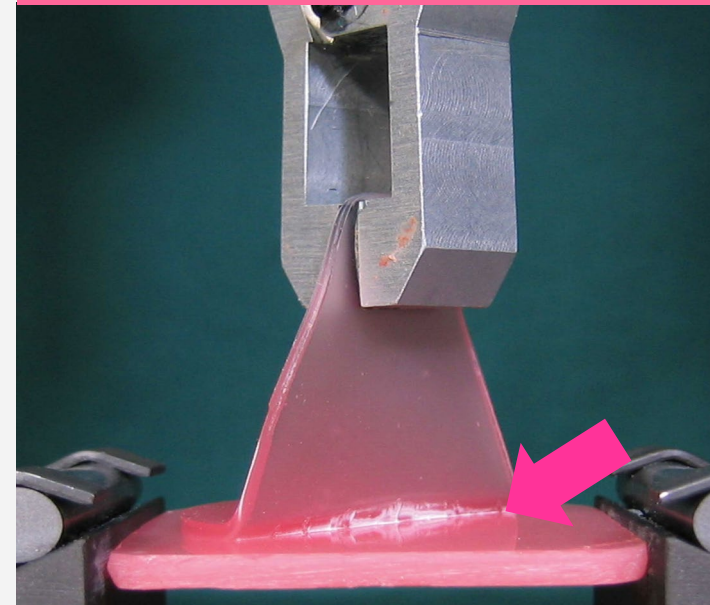
Peeling Test

No Peeling



Sofreliner Tough M

Half adhered samples were peeled by 9.8N



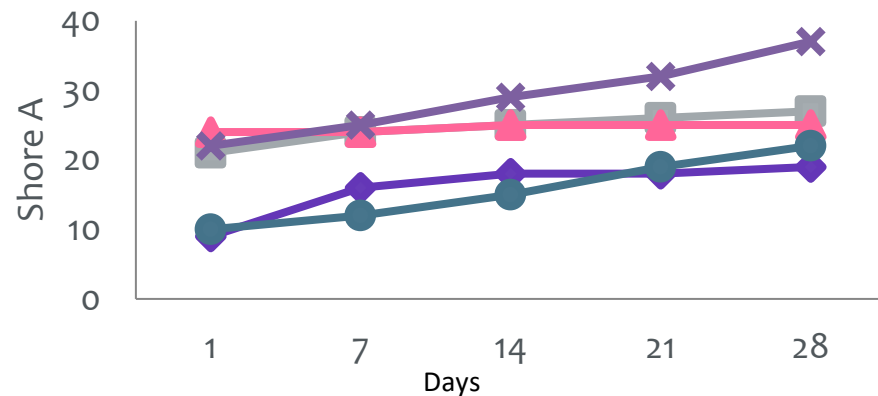
Conventional Product

Soft and Stable

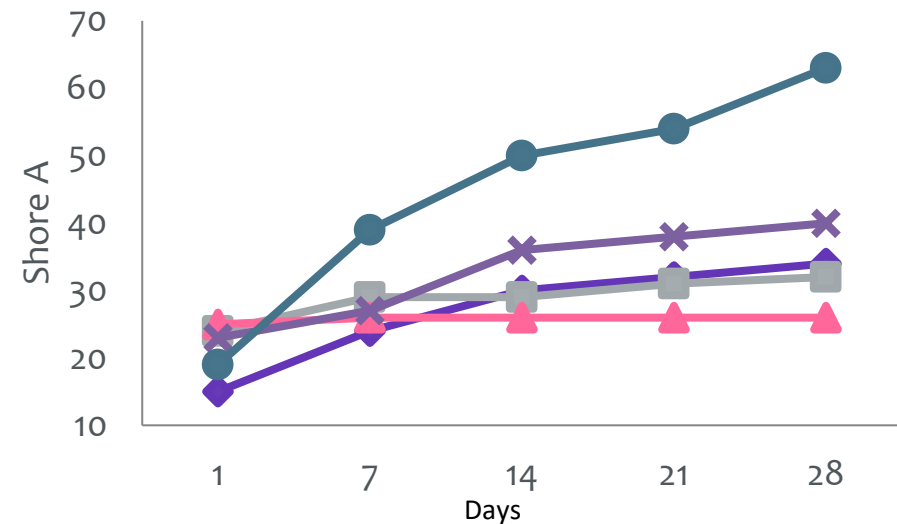
Acrylic materials gradually harden as opposed to silicone materials.

Sofreliner Tough® silicone products maintain the same comfort characteristics over time and under different conditions.

Patients enjoy the same comfort level from Day 1 to Day 'Done'.



Change in Shore A (37°C Water)



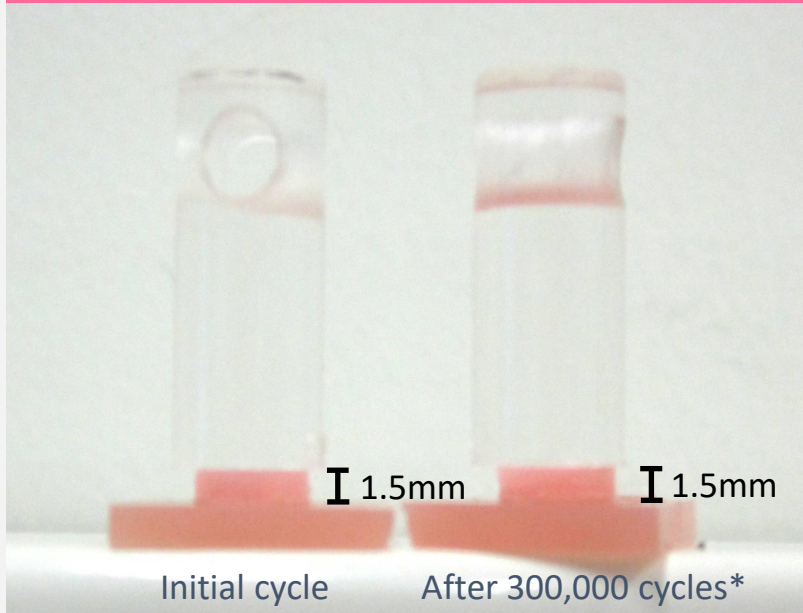
Change in Shore A (37°C Olive Oil)



Higher Durability

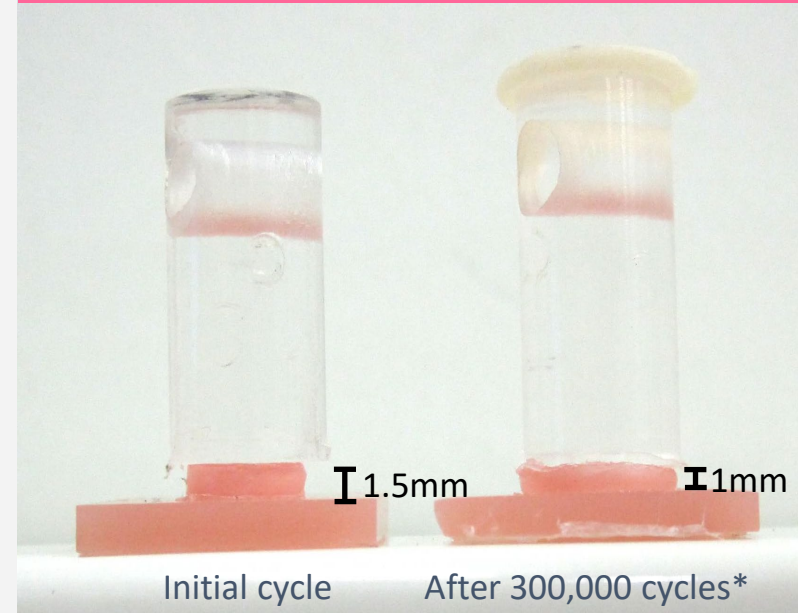
Most products lose their shape and form during regular use, leading to ill fitting dentures in a short amount of time. **Sofreliner Tough®** keeps its form and fit throughout its lifetime.

Sofreliner Tough®



No degradation
Thickness and shape unchanged

Conventional Product



Measurable and visibly degraded

High Stain Resistance

Sofreliner Tough® has a more natural appearance than many other leading brands.

Sofreliner Tough® also resists staining and discoloration far better than other brands in even the most rigorous conditions.

Submersion Test (24 Hours)

	BEFORE	Curry	Coffee
Sofreliner Tough Soft			
COE-Soft*			
Lynal*			
Visco-gel*			

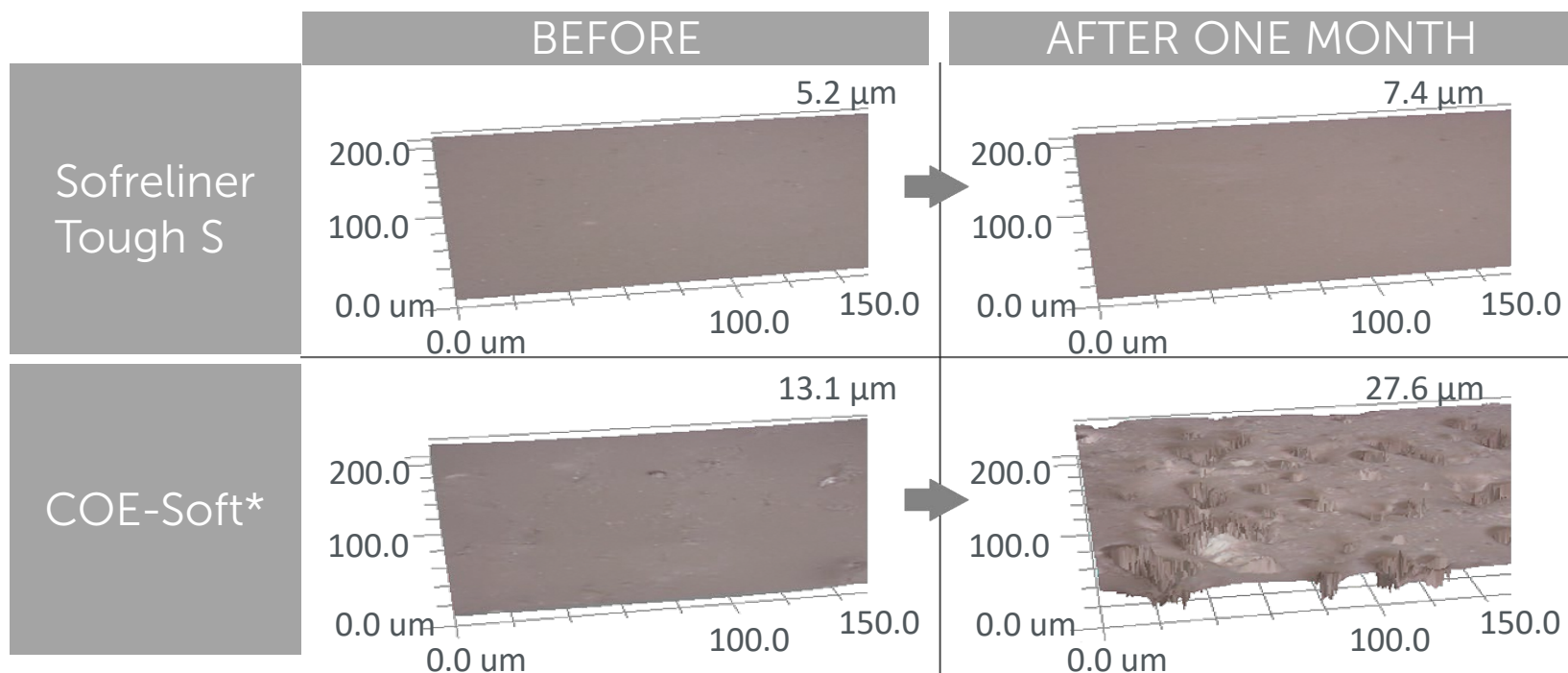
Source: Tokuyama Dental R&D

*Not a registered trademark of Tokuyama Dental America

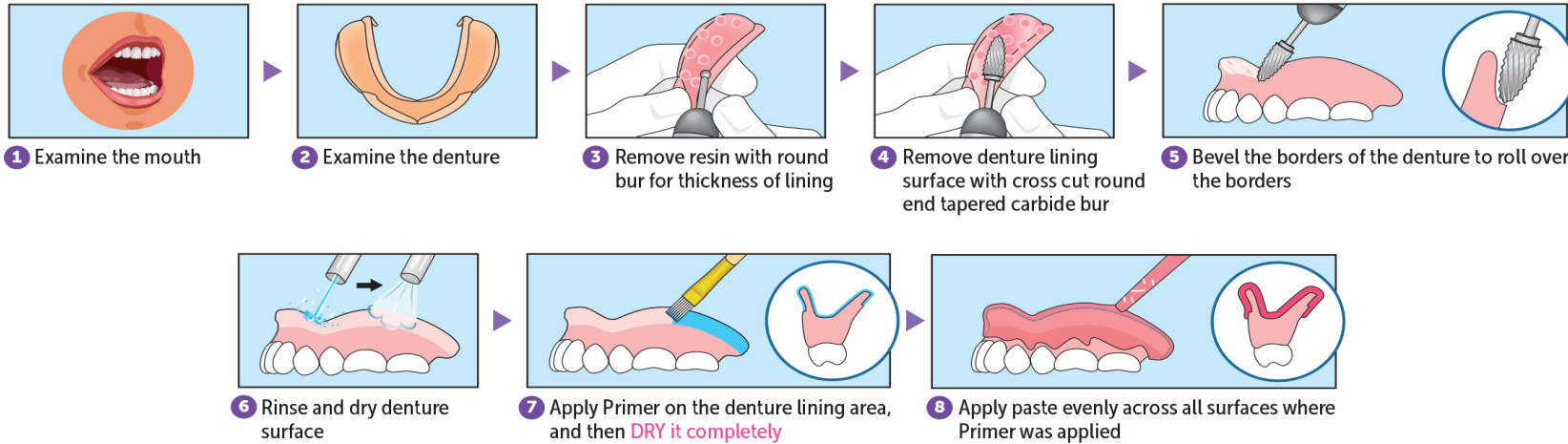
Longer Lasting Surface Smoothness

Sofreliner Tough® better resists the build up of bacteria, plaque, and odor thanks to long lasting surface smoothness.

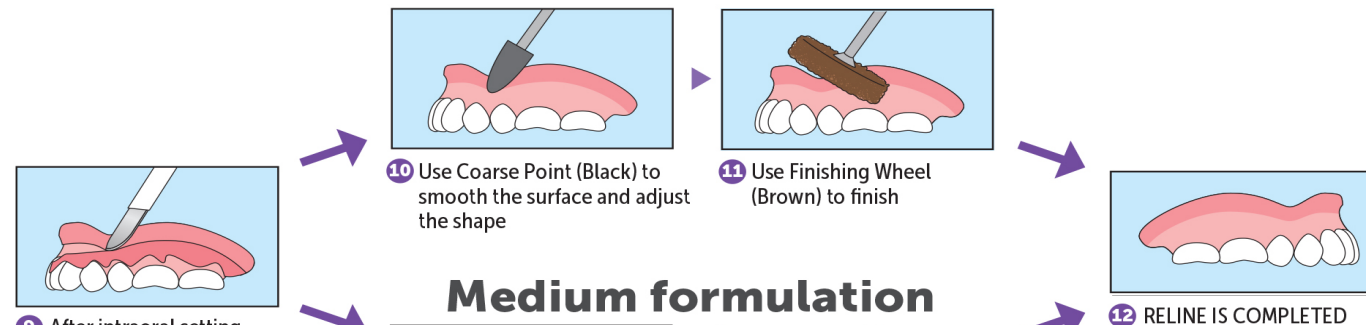
3D image of surface after water immersion for 1 month



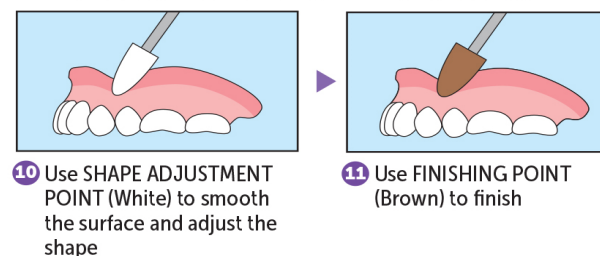
Standard Procedure Guide



Soft formulation



Medium formulation



Silicone Remover

Complementing Product in Denture Reline

Remove old reline material in seconds with less grinding and less mess.

1. Apply to the margin



2. Peel off old reline

Gently rock the denture as you peel away the old reline.



3. Done!



*In some cases, minimal cutting or grinding maybe needed to separate a small part of the soft reline from the denture base before applying silicone remover.

SOFRELINER TOUGH®

Frequently Asked Questions

Q1. Can **Sofreliner Tough®** be used as tissue conditioner?

A1. **Sofreliner Tough®** is not officially indicated to be used as tissue conditioner. Some doctors use it on their own responsibility.

Q2. How many relines can be completed with one cartridge of **Sofreliner Tough®** ?

A2. 3- Full

5- Upper

7- Lower

Product Portfolio



Sofreliner Tough S Kit

- 52g Cartridge
- 10mL Primer Bottle
- Accessories
 - Spatula (No. 001)
 - Brush (No. 5)
 - Drip-Cup
 - TD II Mixing Tips XS (x10)
 - Coarse Point (Black)
 - Finishing Wheel (Brown)
 - Washers (x2)

Product Number: 23401



Sofreliner Tough M Kit

- 54g Cartridge
- 10mL Primer Bottle
- Accessories
 - Spatula (No. 001)
 - Brush (No. 5)
 - Drip-Cup
 - TD II Mixing Tips XS (x10)
 - Shape Adjustment Point (White)
 - Finishing Point (Brown)

Product Number: 23351



Sofreliner Tough S Finishing System

- Coarse Point (Black)
- Finishing Wheels (Brown) (x5)
- Washers (x2)

Product Number: 23431



Sofreliner Tough S Paste

- 52g Cartridge

Product Number: 23411



Sofreliner Tough M Paste

- 54g Cartridge

Product Number: 23356



TD II Mixing Tip XS

- Mixing Tips XS (x50)

Product Number: 23380



TD II Dispenser

- TD II Dispensing Gun

Product Number: 23372



Sofreliner Tough Primer

- 10mL Bottle

Product Number: 23441



Sofreliner Tough Diamond Point

- Diamond Point Bur

Product Number: 23363



Sofreliner Tough M Shape Adjustment Point (White)

- Adjustment Points (x3)

Product Number: 23361



Sofreliner Tough M Finishing Point (Brown)

- Finishing Points (x6)

Product Number: 23362



Silicone Remover

- 7mL Bottle

Product Number: 23337

Additional Resources

<https://www.tokuyama-us.com/sofreliner-tough-soft-denture-reline/>